

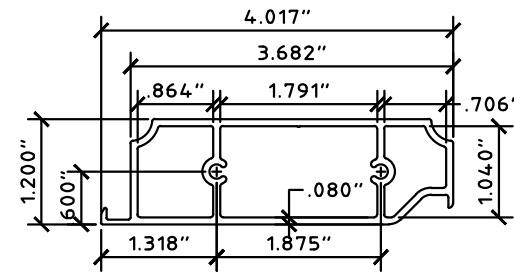
# COLONIAL SHUTTER (HVHZ)

PATENT #8126298

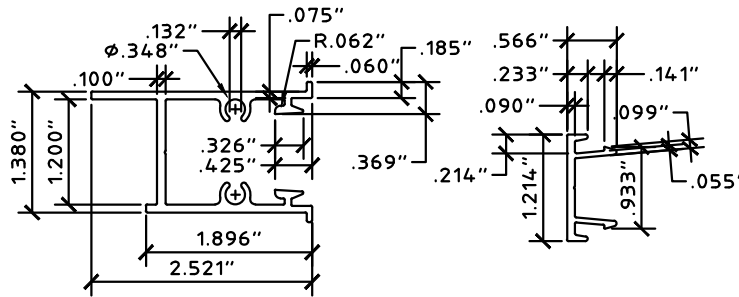
## GENERAL NOTES:

- THESE INSTALLATION INSTRUCTIONS ARE PART OF A PRODUCT APPROVAL EVALUATION AND SHALL ONLY BE USED IN CONJUNCTION WITH THE EVALUATION REPORT SUBMITTED FOR THE SAME PRODUCT APPROVAL.
- THIS SYSTEM HAS BEEN TESTED AND EVALUATED AS A LEVEL D LARGE MISSILE IMPACT PROTECTIVE SYSTEM IN ACCORDANCE WITH THE FLORIDA BUILDING CODE SEVENTH EDITION (2020), FOR USE INSIDE THE HIGH VELOCITY HURRICANE ZONE, AND THE INTERNATIONAL BUILDING CODE (IBC) AND INTERNATIONAL RESIDENTIAL CODE (IRC). SEE EVALUATION FOR MORE INFORMATION.
- POSITIVE AND NEGATIVE DESIGN PRESSURES CALCULATED FOR USE WITH THIS SYSTEM SHALL BE DETERMINED PER SEPARATE ENGINEERING IN ACCORDANCE WITH THE GOVERNING CODE. PRESSURE REQUIREMENTS SHALL BE LESS THAN OR EQUAL TO THE POSITIVE OR NEGATIVE DESIGN PRESSURE CAPACITY VALUES LISTED HEREIN FOR ANY ASSEMBLY AS SHOWN.
- TESTING WAS CONDUCTED IN ACCORDANCE WITH TAS 201/202/203 AND ASTM E1886/E1996/E330. SEE EVALUATION REPORT FOR MORE INFORMATION.
- DESIGN PRESSURES NOTED HEREIN ARE BASED ON MAXIMUM TESTED PRESSURES DIVIDED BY A 1.5 SAFETY FACTOR.
- NO INCREASE IN ALLOWABLE STRESS HAS BEEN USED IN THE DESIGN OF THESE PRODUCTS. WIND LOAD DURATION FACTOR  $C_d = 1.6$  WAS USED FOR WOOD ANCHOR DESIGN.
- DETERMINE THE POSITIVE AND NEGATIVE DESIGN LOADS TO USE WHEN REFERENCING THESE DOCUMENTS IN ACCORDANCE WITH THE GOVERNING CODE AND GOVERNING WIND VELOCITY. FOR WIND LOAD CALCULATIONS IN ACCORDANCE WITH ASCE 7, A DIRECTIONALITY FACTOR OF  $K_d = 0.85$  SHALL BE USED.
- THE SYSTEM DETAILED HEREIN IS GENERIC AND DOES NOT PROVIDE INFORMATION FOR A SPECIFIC SITE.
- PERMIT HOLDER SHALL VERIFY THE ADEQUACY OF THE EXISTING STRUCTURE TO WITHSTAND SUPERIMPOSED LOADS.
- ANCHORS SHALL BE INSTALLED PER MANUFACTURER RECOMMENDATIONS. MINIMUM EMBEDMENT AND EDGE DISTANCE EXCLUDES STUCCO, FOAM, BRICK, AND OTHER WALL FINISHES.
- USE OF THESE APPROVAL DOCUMENTS SHALL COMPLY WITH CHAPTER 61G15-23 OF THE FLORIDA ADMINISTRATIVE CODE.
- THESE APPROVAL DOCUMENTS ARE SUITABLE TO BE APPLIED BY THE CONTRACTOR PROVIDED THE CONTRACTOR DOES NOT DEVIATE FROM THE CONDITIONS DETAILED HEREIN AND THE CONTRACTOR VERIFIES THAT THE EXISTING STRUCTURE DOES NOT DEVIATE IN EITHER FORM OR MATERIAL FROM THE STRUCTURAL SUBSTRATES DETAILED HEREIN.
- ANY MODIFICATIONS OR ADDITIONS TO THESE APPROVAL DOCUMENTS WILL VOID THE APPROVAL DOCUMENTS.
- EACH SHUTTER ASSEMBLY SHALL BE PERMANENTLY LABELED WITH THE FOLLOWING MINIMUM INFORMATION:  

TOWN & COUNTRY INDUSTRIES  
FORT LAUDERDALE, FL  
9 LB MISSILE LEVEL D - ASTM E1886, E1996 & E330  
TAS 201, 202 & 203  
FLORIDA PRODUCT APPROVAL NUMBER
- ALL EXTRUSIONS SHOWN SHALL BE 6063-T6 ALUMINUM ALLOY, U.O.N., WITH A MINIMUM  $F_y$  OF 25 K.S.I.
- ALL BOLTS AND WASHERS (EXCLUDING INSTALLATION) SHALL BE STAINLESS STEEL WITH A MINIMUM TENSILE STRENGTH OF 60 K.S.I., U.O.N. POP RIVETS SHALL BE 1/4"Ø OR 3/16"Ø 5052 ALUM. ALLOY.
- MAXIMUM ALLOWABLE DESIGN PRESSURE IN CLOSED POSITION PROVIDING WIND LOAD & IMPACT RESISTANCE = **+69.3/-79.5 PSF** FOR ALL NON-SLIDING PANEL WITH TRACK CONFIGURATIONS. MAXIMUM ALLOWABLE DESIGN PRESSURE IN CLOSED POSITION FOR ALL SLIDING PANEL TRACK CONFIGURATIONS = **+57.2/-66.2 PSF**.
- MAXIMUM ALLOWABLE DESIGN PRESSURE IN OPEN POSITION = **+/- 28 PSF**
- SHUTTER ASSEMBLY MUST BE CLOSED AND SECURED AND SHALL NOT BE LEFT IN THE OPEN POSITION IN THE EVENT OF A WIND STORM EVENT.
- ALL STEEL IN CONTACT WITH ALUMINUM SHALL BE PAINTED OR PLATED.

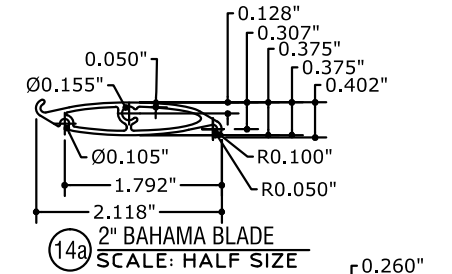


1 MUNTIN  
SCALE: HALF SIZE

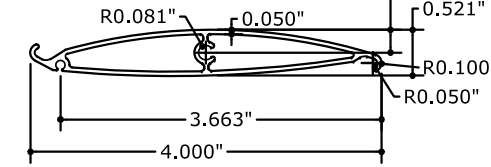


2 JAMB  
SCALE: HALF SIZE

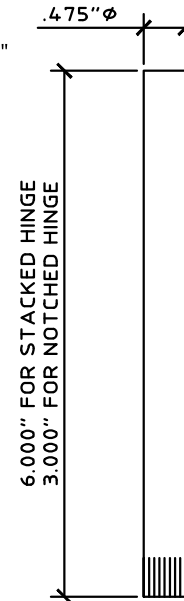
3 JAMB SNAP  
SCALE: HALF SIZE



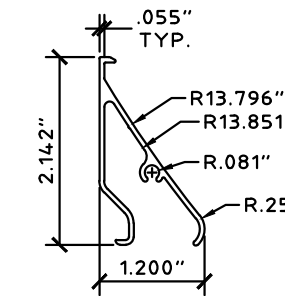
14a 2" BAHAMA BLADE  
SCALE: HALF SIZE



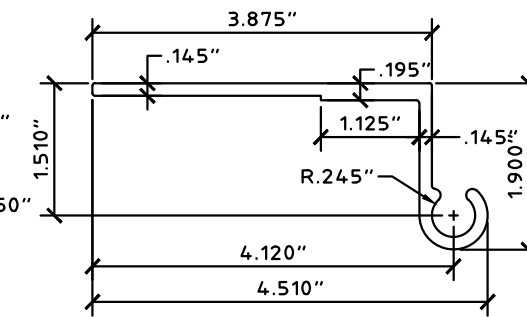
14b 4" BAHAMA BLADE  
SCALE: HALF SIZE



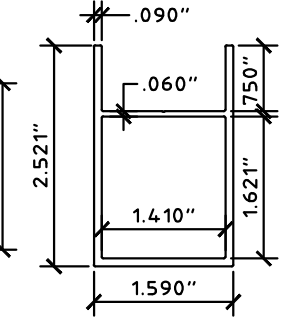
16 ALT. HINGE PIN  
SCALE: HALF SIZE



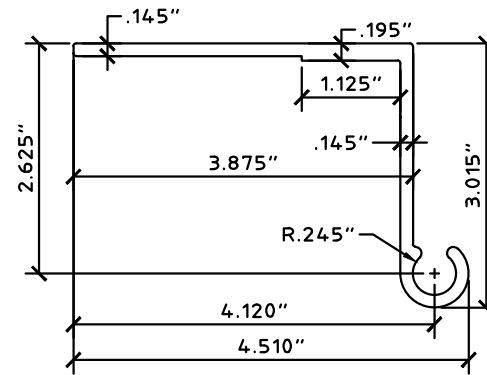
5 COLONIAL BLADE  
SCALE: HALF SIZE



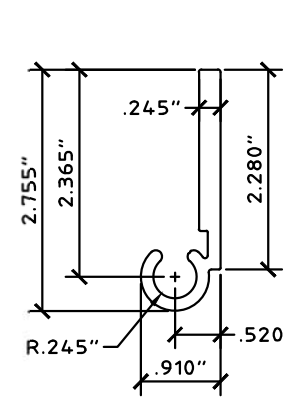
6 WALL HINGE  
SCALE: HALF SIZE



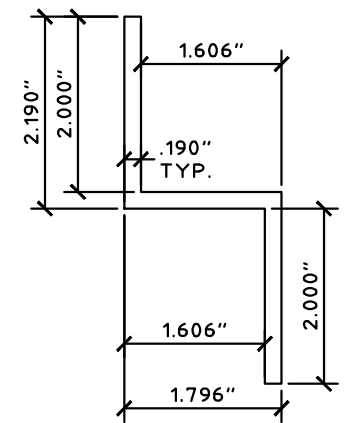
7 HEADER / SILL  
SCALE: HALF SIZE



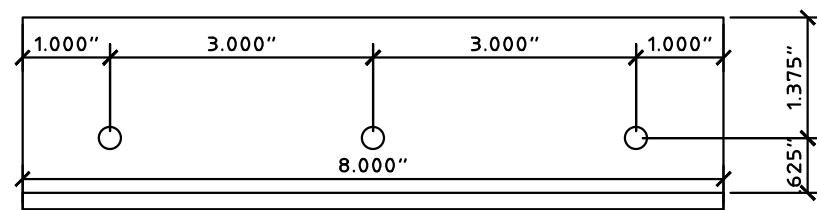
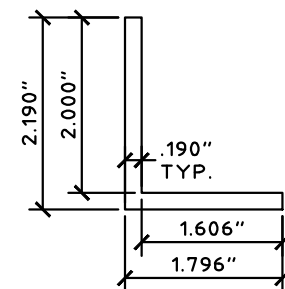
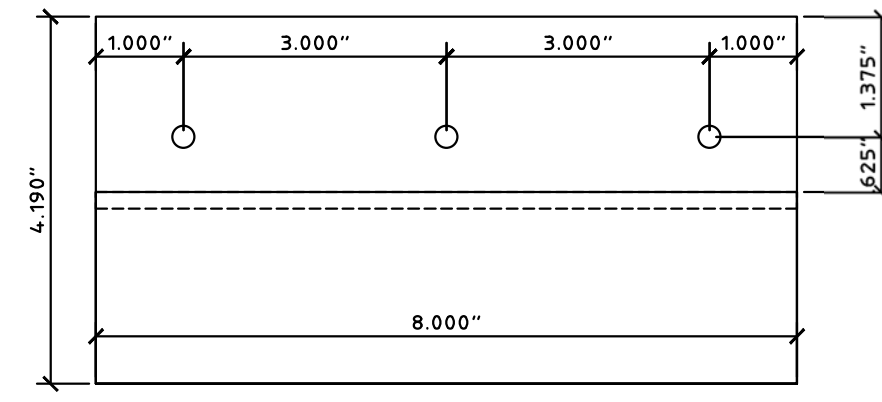
8 BUILD-OUT WALL HINGE  
SCALE: HALF SIZE



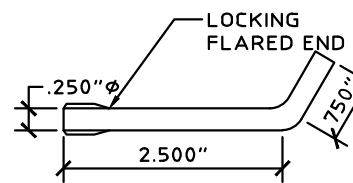
9 FLAT HINGE  
SCALE: HALF SIZE



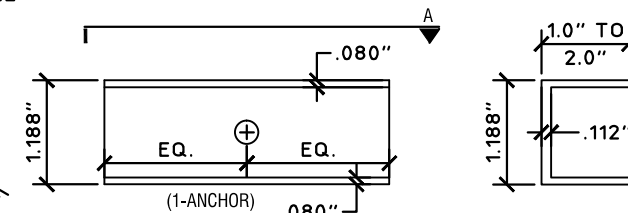
10 2" BAR - PROFILE & LAYOUT  
SCALE: HALF SIZE



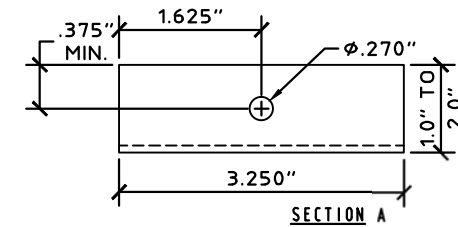
11 ANGLE  
SCALE: HALF SIZE



12 L-PIN - 1/4" Ø  
SCALE: HALF SIZE



13 "C" CLIPS  
SCALE: HALF SIZE



**VISIT ECALC.IO/26193**

FOR SITE SPECIFIC DEVIATIONS & MORE INFORMATION ABOUT THIS DOCUMENT OR SCAN THIS QR CODE

VISIT [ENGINEERINGEXPRESS.COM/STORE](http://ENGINEERINGEXPRESS.COM/STORE) FOR ADDITIONAL PLANS, REPORTS & RESOURCES

FRANK BENNARDO, PE  
PE# 0046549 CA#9885

2/16/2021

**ENGINEERING EXPRESS**

CORPORATE OFFICE:  
160 SW 12th AVE, SUITE 106  
DEERFIELD BEACH, FL 33442  
(954) 354-0660 | (866) 396-9999  
TEAM@ENGINEERINGEXPRESS.COM  
ENGINEERINGEXPRESS.COM

**Town & Country**  
INDUSTRIES

Wholesale Aluminum and Building Products  
A Division of AEC Supply Co., Inc.

400 WEST MCNAB ROAD  
FT. LAUDERDALE, FL 33309  
FL16219.2

| DRWN | CHKD | DATE     |
|------|------|----------|
| KL   | FLB  | 12/20/12 |
| RWN  | TSB  | 4/16/15  |
| RWN  | FLB  | 9/28/16  |
| RWN  | FLB  | 8/07/17  |
| CCB  | RWN  | 7/01/20  |

REMARKS

INIT ISSUE

2014 FBC

REV - ADD 4" BLADE

2017 FBC

2020 FBC

THIS DOCUMENT IS THE PROPERTY OF FRANK L. BENNARDO, P.E. AND SHALL NOT BE REPRODUCED, COPIED, OR TRANSMITTED IN ANY FORM OR BY ANY MEANS, ELECTRONIC OR MECHANICAL, INCLUDING PHOTOCOPYING, RECORDING, OR BY ANY INFORMATION STORAGE AND RETRIEVAL SYSTEM. ANY UNAUTHORIZED ALTERATIONS, ADDITIONS, HIGHLIGHTS, OR OTHER MARKINGS TO THIS DOCUMENT ARE NOT PERMITTED AND INVALIDATE OUR CERTIFICATION.

COPYRIGHT ENGINEERING EXPRESS

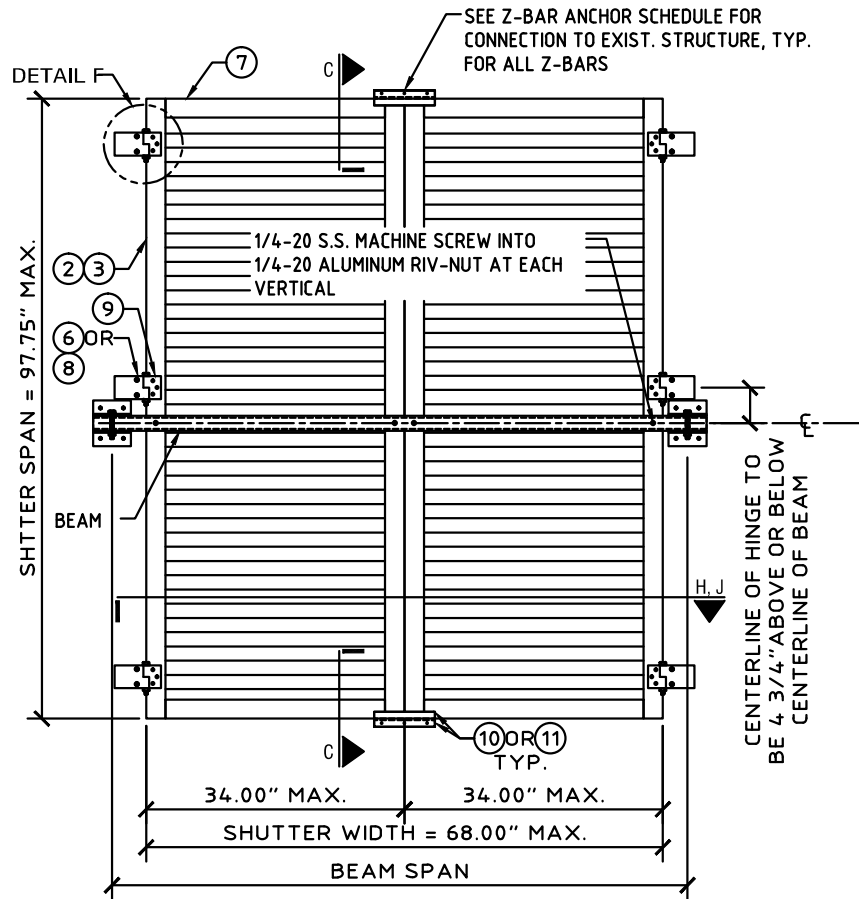
20-26193

SCALE: -

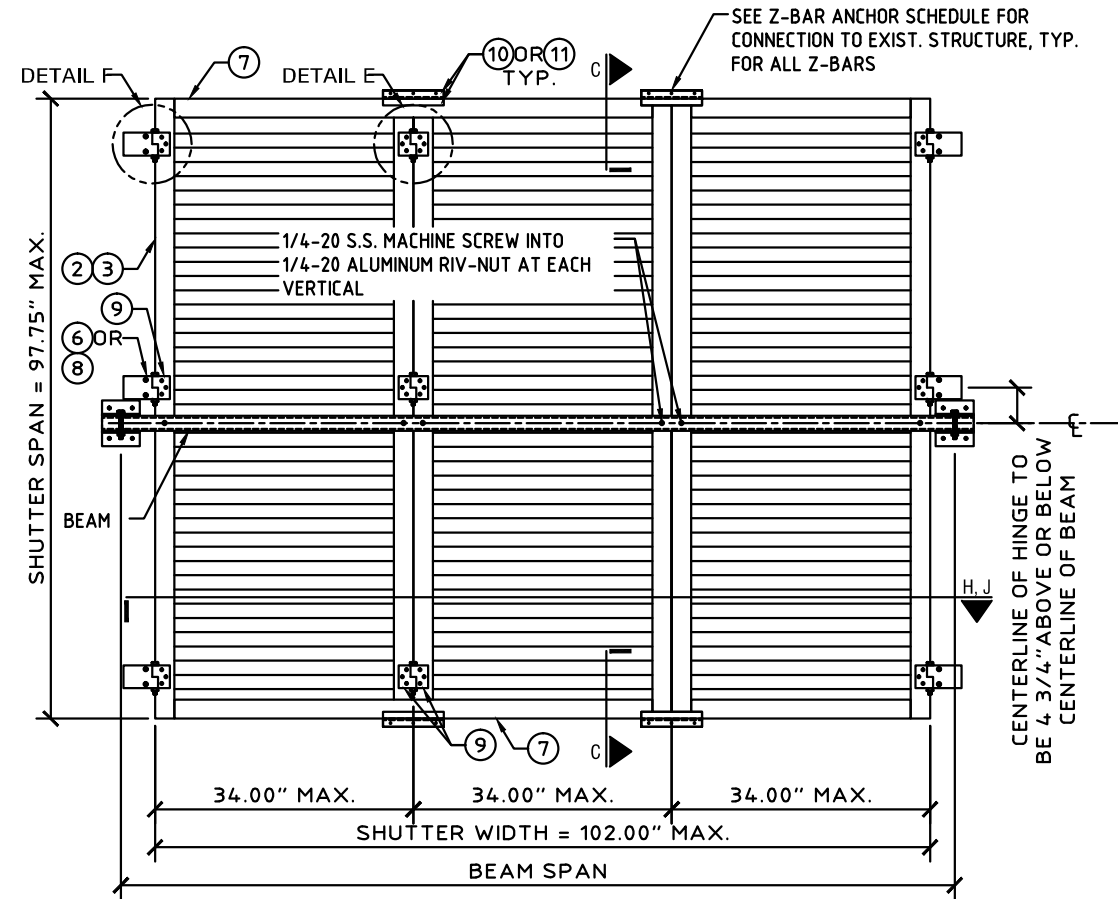
PAGE DESCRIPTION:

1 OF 7

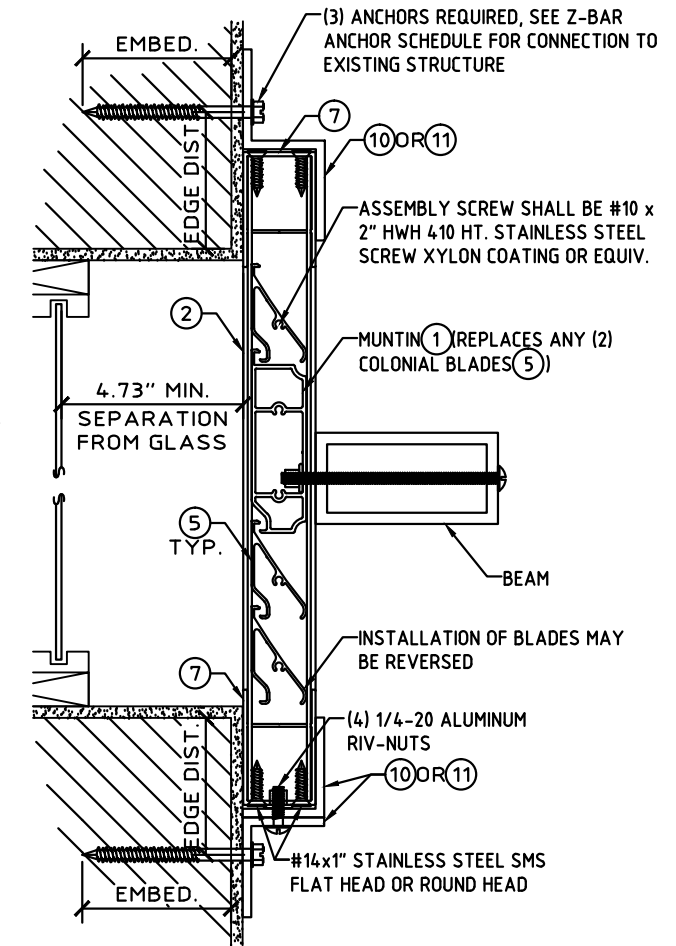
# COLONIAL SHUTTER (HVHZ ONLY)



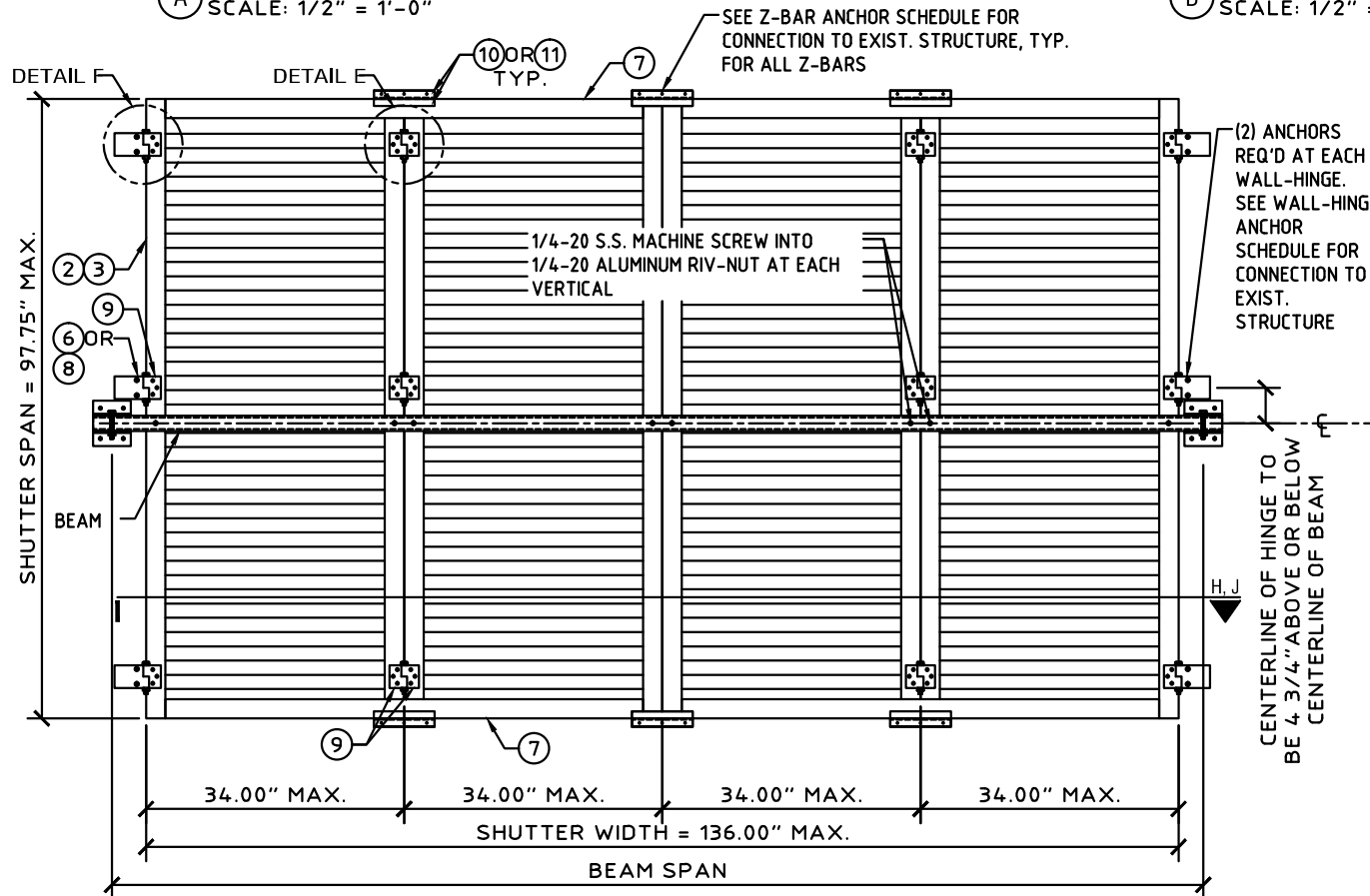
**(A) TYPICAL ELEVATION 2 PANEL**  
SCALE: 1/2" = 1'-0"



**(B) TYPICAL ELEVATION 3 PANEL**  
SCALE: 1/2" = 1'-0"



**(C) TYPICAL PANEL SECTION**  
SCALE: 3" = 1'-0"



**(D) TYPICAL ELEVATION 4 PANELS MAX.**  
SCALE: 1/2" = 1'-0"

## BEAM SCHEDULE

| BEAM SIZE  | ALUMINUM ALLOY | SHUTTER SPAN | BEAM SPAN (+/- 79.5 PSF MAX) | WALL BRACKET ANCHOR TYPES (+69.3/-79.5 PSF MAX) |              |                   |
|------------|----------------|--------------|------------------------------|---|--------------|-------------------|
|            |                |              |                              | CONCRETE  | HOLLOW BLOCK | WOOD (G=0.42 MIN) |
| 2"x3"x1/8" | 6063-T6        | 8'-1.75"     | 5' 6"                        | A,B,C,D,E                                       | A,C,E        | B,C               |
|            |                | 6'-8"        | 6' 1"                        | A,B,C,D,E                                       | A,B,C,E      | B,C               |
|            |                | 5'-10"       | 6' 6"                        | A,B,C,D,E                                       | A,B,C,E      | B,C               |
| 2"x4"x1/8" | 6063-T6        | 8'-1.75"     | 6' 9"                        | A,B,C,D,E                                       | A,C          | B,C               |
|            |                | 6'-8"        | 7' 5"                        | A,B,C,D,E                                       | A,C          | B,C               |
|            |                | 5'-10"       | 8' 0"                        | A,B,C,D,E                                       | A,C          | B,C               |
| 2"x5"x1/8" | 6063-T6        | 8'-1.75"     | 8' 0"                        | A,B,C,D,E                                       | A,C          |                   |
|            |                | 6'-8"        | 8' 10"                       | A,B,C,D,E                                       | A,C          | B,C               |
|            |                | 5'-10"       | 9' 5"                        | A,B,C,D,E                                       | A,C          | B,C               |
| 2"x4"x1/4" | 6061-T6        | 8'-1.75"     | 10' 5"                       | A,B,C,D,E                                       |              |                   |
|            |                | 6'-8"        | 11' 6"                       | A,B,C,D,E                                       | A,C          |                   |
|            |                | 5'-10"       | 12' 4"                       | A,B,C,D,E                                       | A,C          |                   |

- TYPE A:** 1/4-20 ALL POINT SOLID SET ANCHORS:
  - IN CONCRETE (3.35KSI MIN) WITH 7/8" MIN EMBED., 3" MIN EDGE DIST. AND 3" MIN SPACING
  - IN HOLLOW CONCRETE BLOCK WITH 7/8" MIN EMBED., 3" MIN EDGE DIST. AND 3" MIN SPACING
- TYPE B:** 1/4" EYEWALL ARMOR MALE/FEMALE BOLT OR 1/4-20 DEWALT PANELMATES (MALE/FEMALE):
  - IN CONCRETE (3.35KSI MIN) WITH 1 3/4" MIN EMBED., 2 1/2" MIN EDGE DIST. AND 3" MIN SPACING
  - IN HOLLOW CONCRETE BLOCK WITH 1 3/4" MIN EMBED., 2" MIN EDGE DIST. AND 3" MIN SPACING
  - IN WOOD (G=0.42 MIN) WITH 1 1/2" MIN EMBED., 3/4" MIN EDGE DIST. AND 1 1/2" MIN SPACING
- TYPE C:** 1/4" ITW TAPCON SG:
  - IN CONCRETE (3.35KSI MIN) WITH 1 3/4" MIN EMBED., 2 1/2" MIN EDGE DIST. AND 3" MIN SPACING
  - IN HOLLOW CONCRETE BLOCK WITH 1 3/4" MIN EMBED., 2" MIN EDGE DIST. AND 3" MIN SPACING
  - IN WOOD (G=0.42 MIN) WITH 1 3/8" MIN EMBED., 3/4" MIN EDGE DIST. AND 1 1/2" MIN SPACING
- TYPE D:** 1/4" MILLENNIUM MILLFAST (W/ T&C ULTRACOTE):
  - IN CONCRETE (3.275KSI MIN) WITH 1 3/4" EMBED., 2 1/2" EDGE DIST., AND 4" MIN SPACING
  - IN HOLLOW CONCRETE BLOCK WITH 1 3/4" EMBED., 2 1/2" MIN EDGE DIST. AND 4" MIN SPACING
- TYPE E:** #12 SMS W/ 2" EYEWALL ARMOR NYLON INSERT:
  - IN CONCRETE (2KSI MIN) WITH 2" EMBED., 2" EDGE DIST. AND 3" MIN SPACING
  - IN HOLLOW CONCRETE BLOCK WITH 1 3/4" EMBED., 2" EDGE DIST. AND 3" MIN SPACING



2/16/2021

**ENGINEERING EXPRESS**  
CORPORATE OFFICE:  
160 SW 12th AVE, SUITE 106  
DEERFIELD BEACH, FL 33442  
(954) 354-0660 | (866) 396-9999  
TEAM@ENGINEERINGEXPRESS.COM  
ENGINEERINGEXPRESS.COM

**Town & Country INDUSTRIES**  
Wholesale Aluminum and Building Products  
A Division of AEC Supply Co., Inc.  
400 WEST MCNAB ROAD  
FT. LAUDERDALE, FL 33309  
FL16219.2

| DRWN | CHKD | DATE     |
|------|------|----------|
| KL   | FLB  | 12/20/12 |
| RWN  | TSB  | 4/16/15  |
| RWN  | FLB  | 9/28/16  |
| RWN  | FLB  | 8/07/17  |
| CCB  | RWN  | 7/01/20  |

REMARKS  
INIT ISSUE  
2014 FBC  
REV - ADD 4" BLADE  
2017 FBC  
2020 FBC

THIS DOCUMENT IS THE PROPERTY OF FRANK L. BENNARDO, P.E. AND SHALL NOT BE REPRODUCED OR TRANSMITTED IN ANY FORM OR BY ANY MEANS, ELECTRONIC OR MECHANICAL, INCLUDING PHOTOCOPYING, RECORDING, OR BY ANY INFORMATION STORAGE AND RETRIEVAL SYSTEM, WITHOUT THE WRITTEN PERMISSION OF FRANK L. BENNARDO, P.E. ALTERATIONS, ADDITIONS, HIGHLIGHTING OR OTHER MARKINGS TO THIS DOCUMENT ARE NOT PERMITTED AND INVALIDATE OUR CERTIFICATION.

COPYRIGHT ENGINEERING EXPRESS

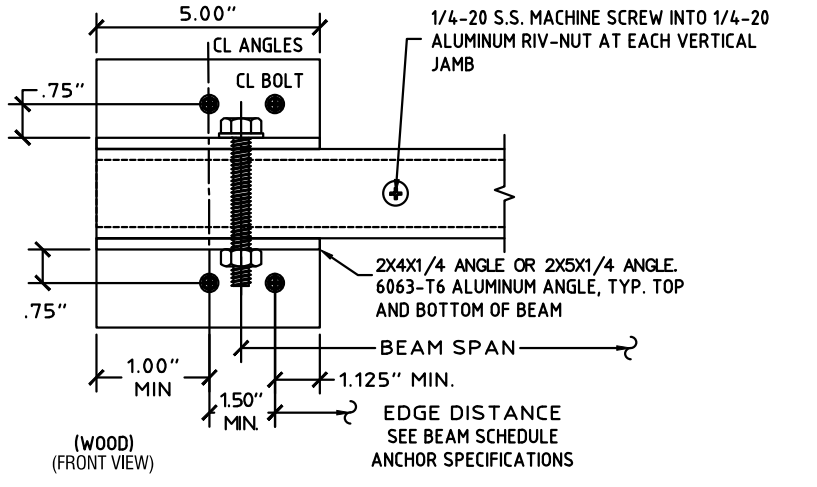
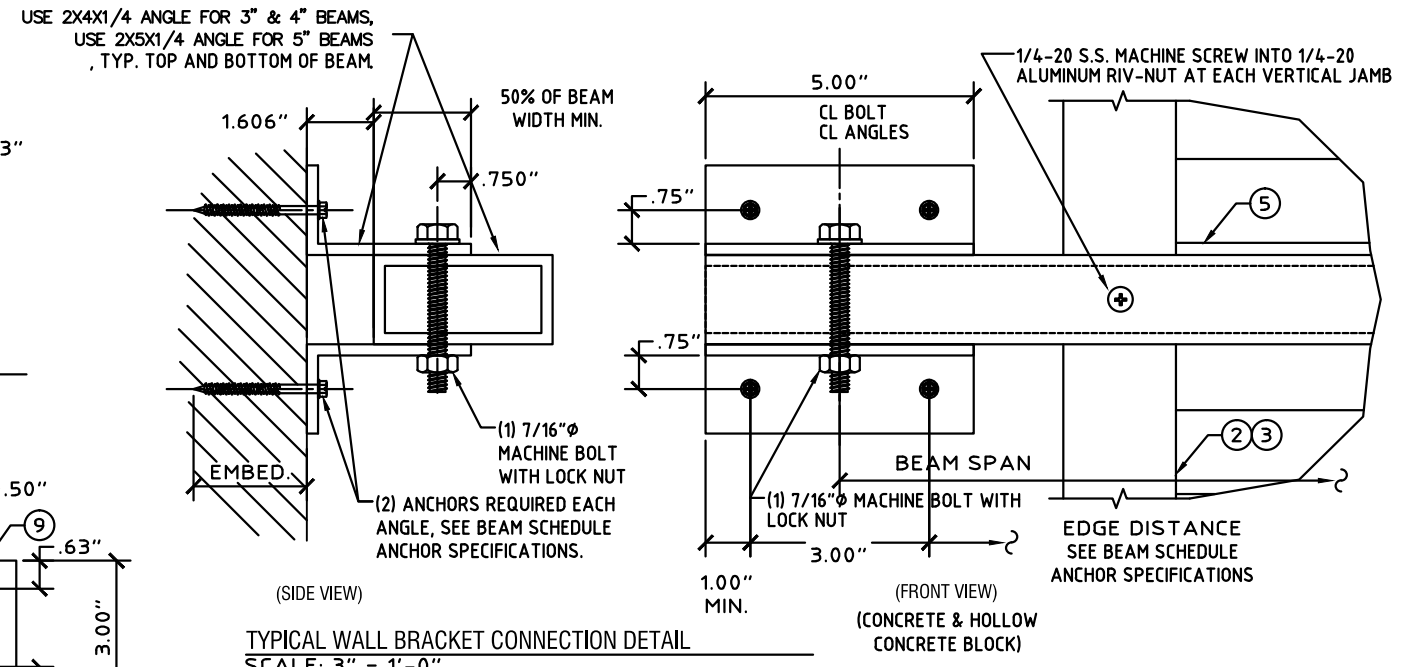
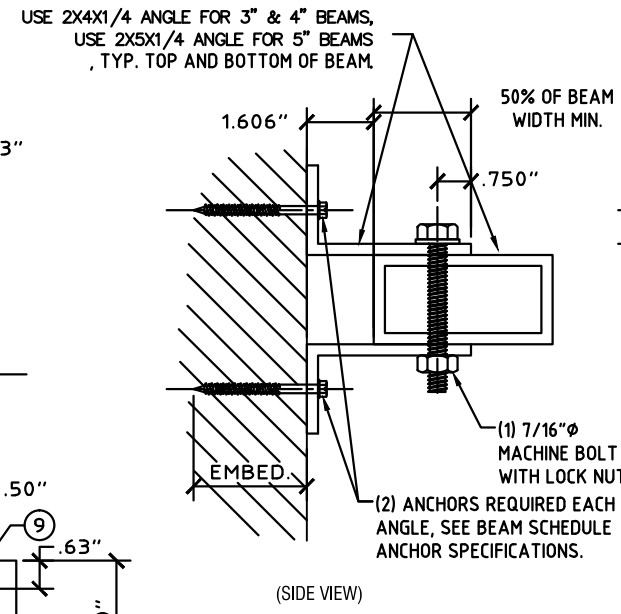
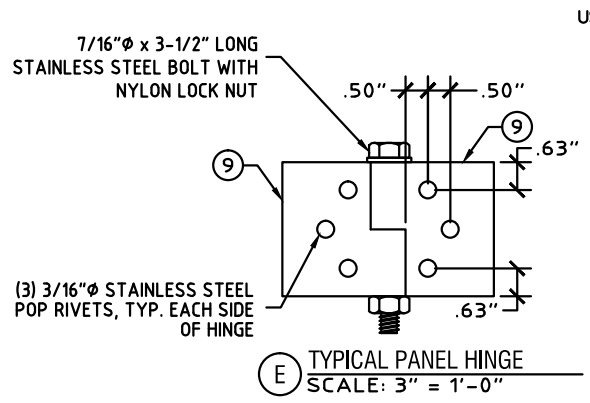
20-26193

SCALE: -  
PAGE DESCRIPTION:

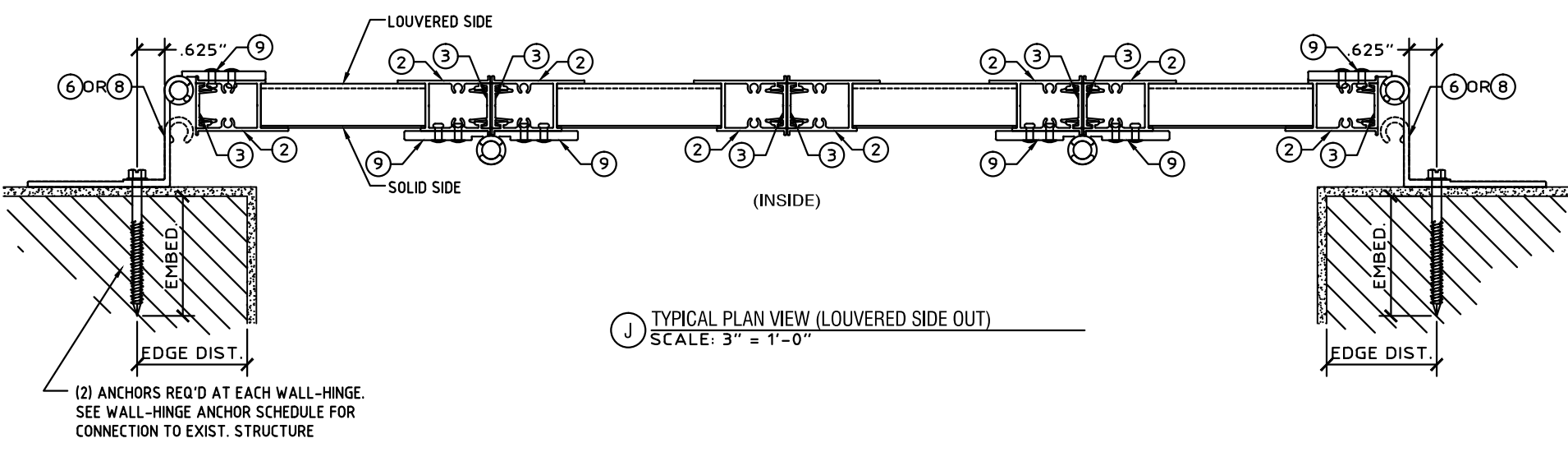
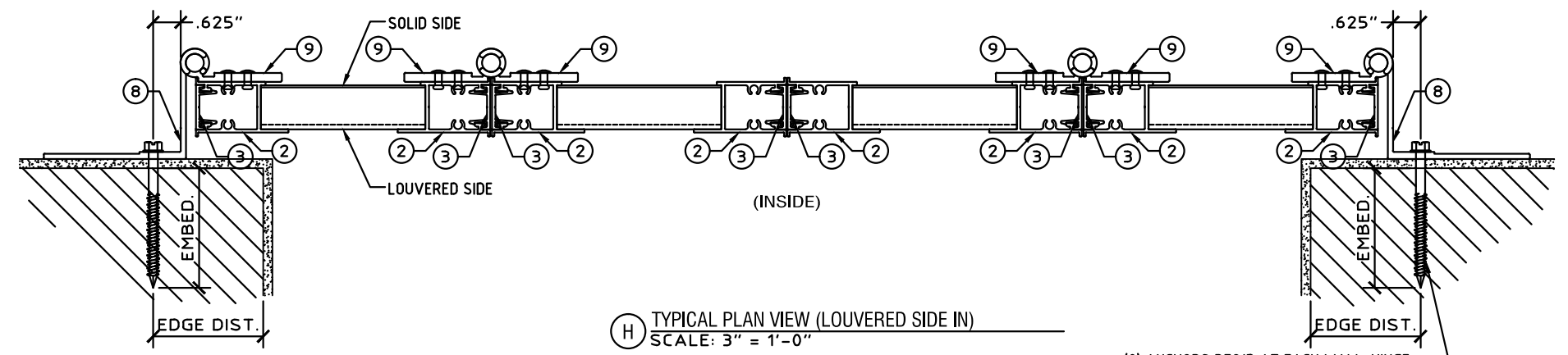


2/16/2021

**ENGINEERING EXPRESS**  
CORPORATE OFFICE:  
160 SW 12th AVE, SUITE 106  
DEERFIELD BEACH, FL 33442  
(954) 354-0660 | (866) 396-9999  
TEAM@ENGINEERINGEXPRESS.COM  
ENGINEERINGEXPRESS.COM



| Z-BAR ANCHOR SCHEDULE                |          |                            |                    |             |              |
|--------------------------------------|----------|----------------------------|--------------------|-------------|--------------|
| MANUF.                               | DIAMETER | DESCRIPTION                | MIN. EDGE DISTANCE | MIN. EMBED. | MIN. SPACING |
| CONCRETE (MIN. $f_c$ = 3350 PSI)     |          |                            |                    |             |              |
| DEWALT                               | 1/4 IN.  | STAINLESS STEEL PANELMATE  | 2.50 IN            | 2.00 IN     | 3.00 IN      |
| DEWALT                               | 1/4 IN.  | MALE PANELMATE (or P..PRO) | 2.50 IN            | 2.00 IN     | 3.00 IN      |
| DEWALT                               | 1/4 IN.  | FEMALE PANELMATE           | 2.50 IN            | 1.75 IN     | 3.00 IN      |
| EYEWALL ARMOR                        | 1/4 IN.  | MALE/FEMALE BOLT           | 2.50 IN            | 1.75 IN     | 3.00 IN      |
| ITW                                  | 1/4 IN.  | TAPCON SG                  | 2.50 IN            | 1.75 IN     | 3.00 IN      |
| ALL-POINTS                           | 1/4 IN.  | SOLID-SET ANCHOR           | 2.00 IN            | 0.875 IN    | 3.00 IN      |
| MILLENIUM                            | 1/4 IN.  | MILLFAST                   | 2.50 IN            | 1.75 IN     | 3.00 IN      |
| HOLLOW CONCRETE BLOCK                |          |                            |                    |             |              |
| DEWALT                               | 1/4 IN.  | STAINLESS STEEL PANELMATE  | 2.00 IN            | 1.25 IN     | 3.00 IN      |
| DEWALT                               | 1/4 IN.  | MALE PANELMATE (or P..PRO) | 2.00 IN            | 1.25 IN     | 3.00 IN      |
| DEWALT                               | 1/4 IN.  | FEMALE PANELMATE           | 2.00 IN            | 1.25 IN     | 3.00 IN      |
| EYEWALL ARMOR                        | 1/4 IN.  | MALE/FEMALE BOLT           | 2.50 IN            | 1.25 IN     | 3.00 IN      |
| ITW                                  | 1/4 IN.  | TAPCON SG                  | 2.50 IN            | 1.25 IN     | 3.00 IN      |
| ALL-POINTS                           | 1/4 IN.  | SOLID-SET ANCHOR           | 2.50 IN            | 0.875 IN    | 3.00 IN      |
| MILLENIUM                            | 1/4 IN.  | MILLFAST                   | 2.50 IN            | 1.25 IN     | 3.00 IN      |
| WOOD (SOUTHERN YELLOW PINE, G=0.54)  |          |                            |                    |             |              |
| DEWALT                               | 1/4 IN.  | STAINLESS STEEL PANELMATE  | 0.75 IN            | 1.875 IN    | 3.00 IN      |
| DEWALT                               | 1/4 IN.  | MALE PANELMATE (or P..PRO) | 0.75 IN            | 1.875 IN    | 3.00 IN      |
| DEWALT                               | 1/4 IN.  | FEMALE PANELMATE           | 0.75 IN            | 1.875 IN    | 3.00 IN      |
| EYEWALL ARMOR                        | 1/4 IN.  | MALE/FEMALE BOLT           | 0.75 IN            | 1.50 IN     | 3.00 IN      |
| ITW                                  | 1/4 IN.  | TAPCON SG                  | 0.75 IN            | 1.50 IN     | 3.00 IN      |
|                                      | 1/4 IN.  | S.S. HANGER BOLT           | 0.75 IN            | 1.25 IN     | 1.50 IN      |
| WOOD (SPRUCE-PINE-FIR (SPF), G=0.42) |          |                            |                    |             |              |
|                                      | 1/4 IN.  | S.S. HANGER BOLT           | 0.75 IN            | 1.25 IN     | 1.50 IN      |



| WALL-HINGE ANCHOR SCHEDULE       |          |                   |                    |             |              |
|----------------------------------|----------|-------------------|--------------------|-------------|--------------|
| MANUF.                           | DIAMETER | DESCRIPTION       | MIN. EDGE DISTANCE | MIN. EMBED. | MIN. SPACING |
| CONCRETE (MIN. $f_c$ = 3192 PSI) |          |                   |                    |             |              |
| ITW                              | 1/4 IN.  | SS TAPCON         | 2.50 IN            | 1.00 IN     | 2.00 IN      |
| ITW                              | 5/16 IN. | TAPCON XL         | 2.1875 IN          | 1.75 IN     | 2.00 IN      |
| HOLLOW CONCRETE BLOCK            |          |                   |                    |             |              |
| DEWALT                           | 1/4 IN.  | ULTRACON          | 2.50 IN            | 1.25 IN     | 2.00 IN      |
| ITW                              | 5/16 IN. | TAPCON XL         | 2.1875 IN          | 1.75 IN     | 2.00 IN      |
| WOOD (G=0.42 MIN)                |          |                   |                    |             |              |
|                                  | #14      | SMS OR WOOD SCREW | 0.75 IN            | 1.50 IN     | 1.50 IN      |
|                                  | 1/4 IN.  | LAG SCREW         | 0.75 IN            | 1.25 IN     | 1.50 IN      |

**Town & Country INDUSTRIES**  
Wholesale Aluminum and Building Products  
A Division of AEC Supply Co., Inc.  
400 WEST MCNAB ROAD  
FT. LAUDERDALE, FL 33309  
FL16219.2

| DRWN/CHKD | DATE     |
|-----------|----------|
| KL        | 12/20/12 |
| FLB       | 4/16/15  |
| RWN       | 9/28/16  |
| TSB       | 8/07/17  |
| FLB       | 7/01/20  |
| RWN       |          |
| CCB       |          |
| RWN       |          |

REMARKS  
INIT ISSUE  
2014 FBC  
REV - ADD 4" BLADE  
2017 FBC  
2020 FBC

THIS DOCUMENT IS THE PROPERTY OF FRANK BENNARDO, P.E. AND SHALL NOT BE REPRODUCED OR TRANSMITTED IN ANY FORM OR BY ANY MEANS, ELECTRONIC OR MECHANICAL, INCLUDING PHOTOCOPYING, RECORDING, OR BY ANY INFORMATION STORAGE AND RETRIEVAL SYSTEM, WITHOUT THE WRITTEN PERMISSION OF FRANK BENNARDO, P.E. ALTERATIONS, ADDITIONS, HIGHLIGHTS OR OTHER MARKINGS TO THIS DOCUMENT ARE NOT PERMITTED AND INVALIDATE OUR CERTIFICATION.

COPYRIGHT ENGINEERING EXPRESS

20-26193  
SCALE: -  
PAGE DESCRIPTION:  
3 OF 7

C:\Users\colby\Engineering\Express\Production - Documents\Projects\20-26193 - FL16219.2 - FullView Colonial Shutter Hybrid (HVHZ Only)\WP\2020 FBC\20-26193e - FL16219.2 - DWG.dwg  
02/16/2021 - 10:56am colby



2/16/2021

**ENGINEERING EXPRESS**  
CORPORATE OFFICE:  
160 SW 12th AVE, SUITE 106  
DEERFIELD BEACH, FL 33442  
(954) 354-0660 | (866) 396-9999  
TEAM@ENGINEERINGEXPRESS.COM  
ENGINEERINGEXPRESS.COM

**Town & Country INDUSTRIES**  
Wholesale Aluminum and Building Products  
A Division of AEC Supply Co., Inc.  
400 WEST MCNAB ROAD  
FT. LAUDERDALE, FL 33309  
FL16219.2

| REMARKS            | DRWN | CHKD | DATE     |
|--------------------|------|------|----------|
| INIT ISSUE         | KL   | FLB  | 12/20/12 |
| 2014 FCC           | RWN  | TSB  | 4/16/15  |
| REV - ADD 4" BLADE | RWN  | FLB  | 9/28/16  |
| 2017 FCC           | RWN  | FLB  | 8/07/17  |
| 2020 FCC           | CCB  | RWN  | 7/01/20  |

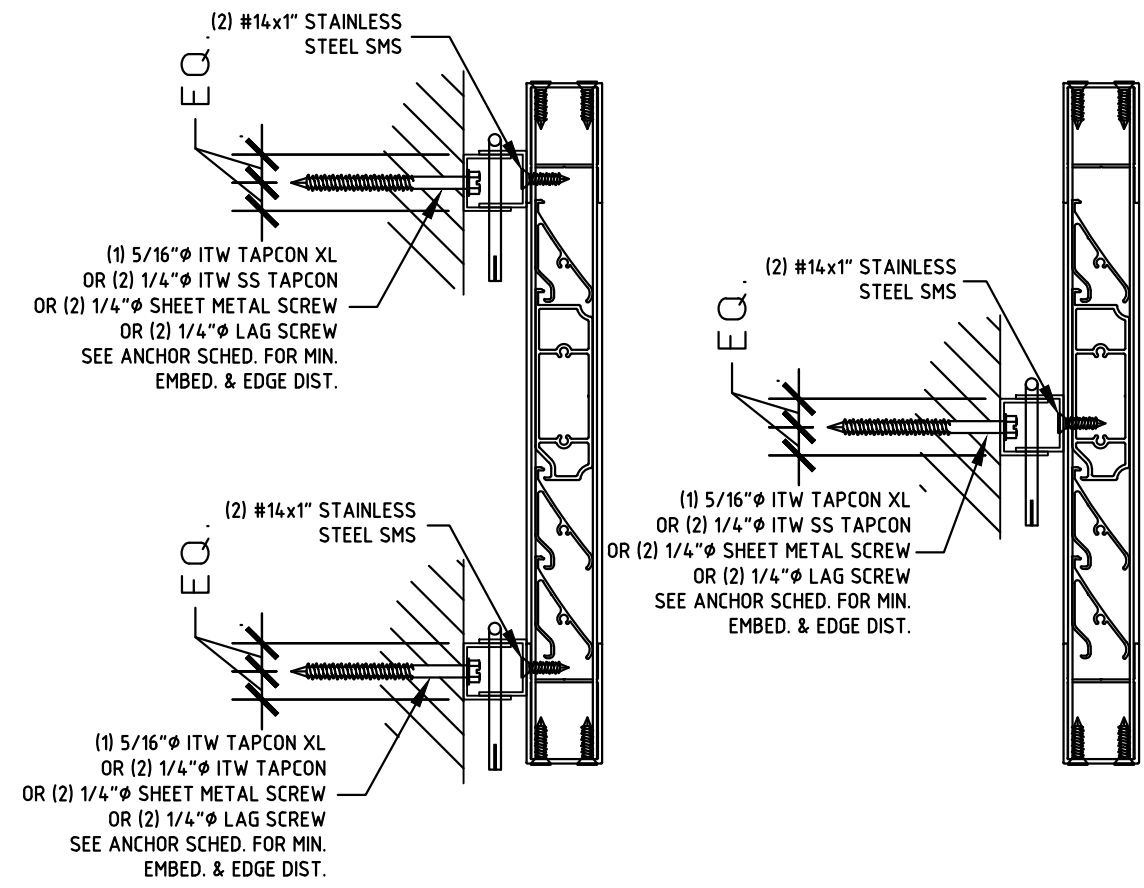
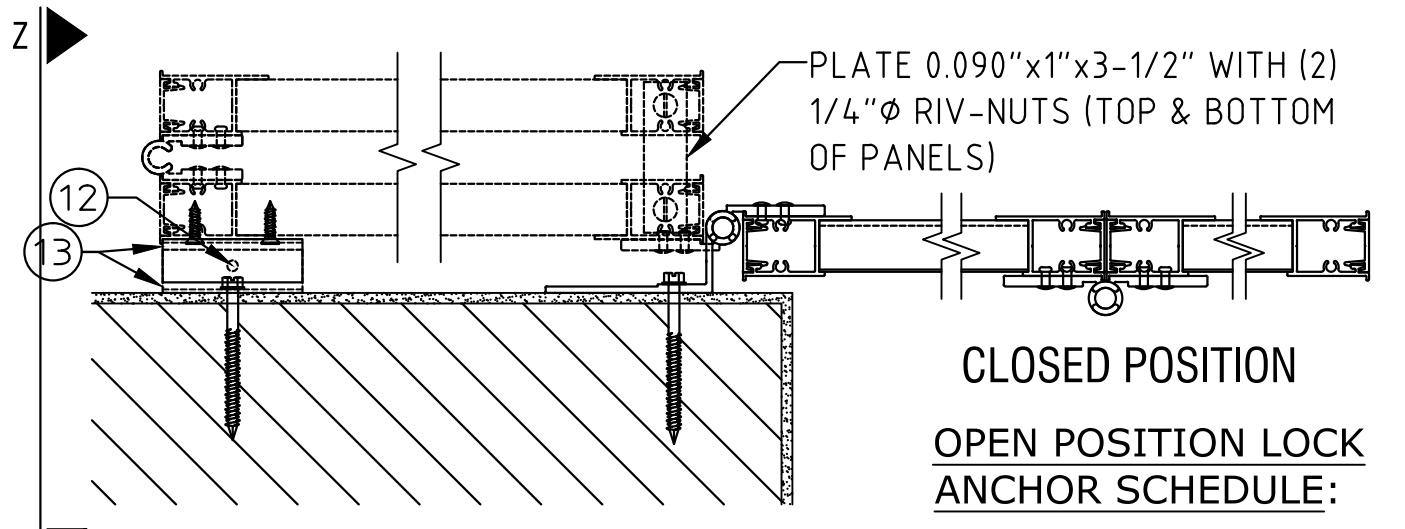
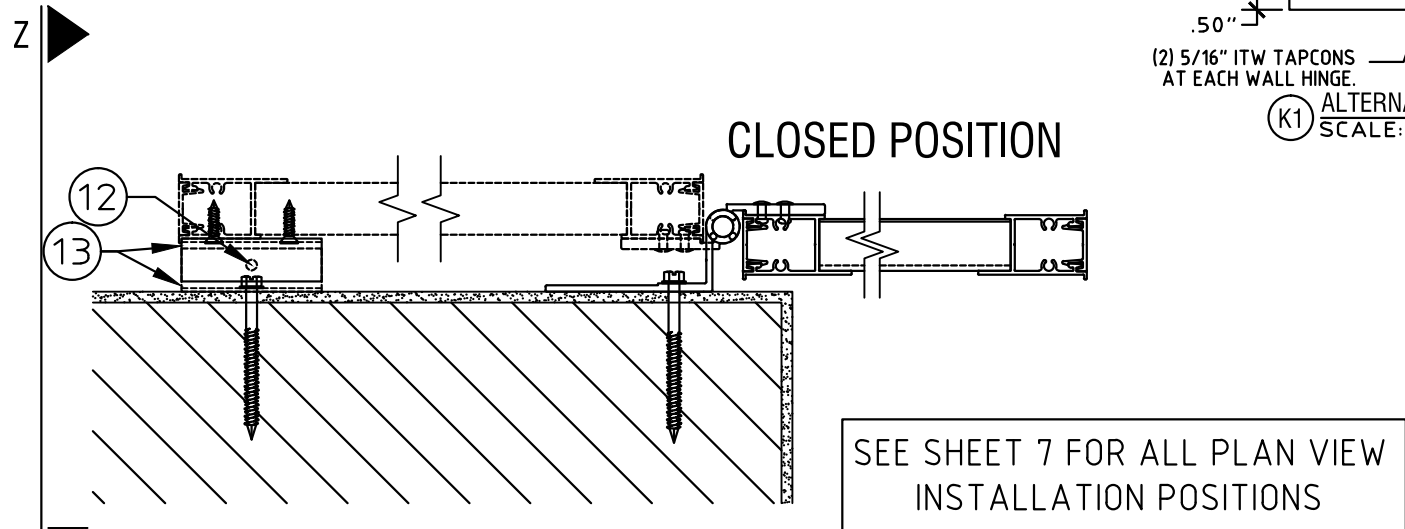
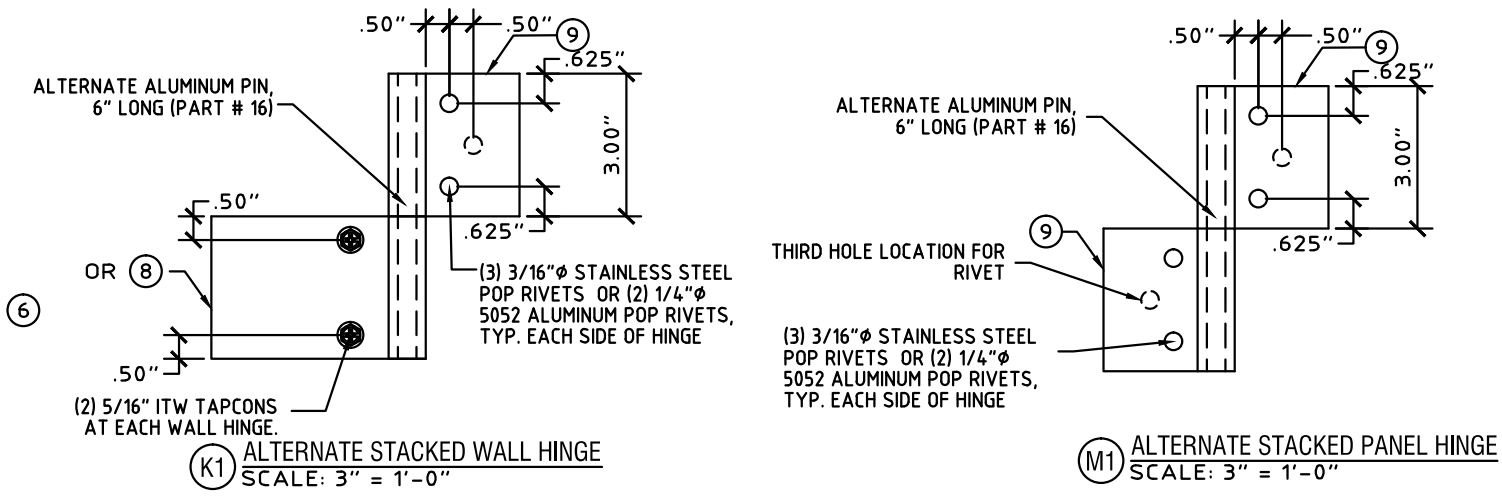
THIS DOCUMENT IS THE PROPERTY OF FRANK BENNARDO, P.E. AND SHALL NOT BE REPRODUCED OR TRANSMITTED IN ANY FORM OR BY ANY MEANS, ELECTRONIC OR MECHANICAL, INCLUDING PHOTOCOPYING, RECORDING, OR BY ANY INFORMATION STORAGE AND RETRIEVAL SYSTEM, WITHOUT THE WRITTEN PERMISSION OF FRANK BENNARDO, P.E. ALTERATIONS, ADDITIONS, HIGHLIGHTS, OR OTHER MARKINGS TO THIS DOCUMENT ARE NOT PERMITTED AND INVALIDATE OUR CERTIFICATION.

COPYRIGHT ENGINEERING EXPRESS

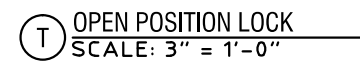
20-26193

SCALE: -

PAGE DESCRIPTION:



NOTE:  
CLIPS REQ'D TOP & BOTTOM FOR SPANS > 69". ONE CLIP REQ'D AT MID-SPAN ( $\pm 3'$ ) FOR SPANS  $\leq 69'$ .



C:\Users\colby\Engineering\Express\Production - Documents\Projects\20-26193 - FL16219.2 - FullView Colonial Shutter Hybrid (HVHZ Only)\WP\2020 FCC\20-26193e - FL16219.2 - DWG.dwg  
02/16/2021 - 10:56am colby



2/16/2021

**ENGINEERING EXPRESS**  
CORPORATE OFFICE:  
160 SW 12th AVE, SUITE 106  
DEERFIELD BEACH, FL 33442  
(954) 354-0660 | (866) 396-9999  
TEAM@ENGINEERINGEXPRESS.COM  
ENGINEERINGEXPRESS.COM

**Town & Country INDUSTRIES**  
Wholesale Aluminum and Building Products  
A Division of AEC Supply Co., Inc.  
400 WEST MCNAB ROAD  
FT. LAUDERDALE, FL 33309

FL16219.2

FL16219.2

| REMARKS            | DRWN | CHKD | DATE     |
|--------------------|------|------|----------|
| INIT ISSUE         | KL   | FLB  | 12/20/12 |
| 2014 FBC           | RWN  | TSB  | 4/16/15  |
| REV - ADD 4" BLADE | RWN  | FLB  | 9/28/16  |
| 2017 FBC           | RWN  | FLB  | 8/07/17  |
| 2020 FBC           | CCB  | RWN  | 7/01/20  |

THIS DOCUMENT IS THE PROPERTY OF FRANK L. BENNARDO, P.E. AND SHALL NOT BE REPRODUCED, COPIED, OR TRANSMITTED IN ANY FORM OR BY ANY MEANS, ELECTRONIC OR MECHANICAL, INCLUDING PHOTOCOPYING, RECORDING, OR BY ANY INFORMATION STORAGE AND RETRIEVAL SYSTEM, WITHOUT THE WRITTEN PERMISSION OF FRANK L. BENNARDO, P.E. ANY ALTERATIONS, ADDITIONS, HIGHLIGHTING OR OTHER MARKINGS TO THIS DOCUMENT ARE NOT PERMITTED AND INVALIDATE OUR CERTIFICATION.

COPYRIGHT ENGINEERING EXPRESS

20-26193

SCALE: -

PAGE DESCRIPTION:

-

-

-

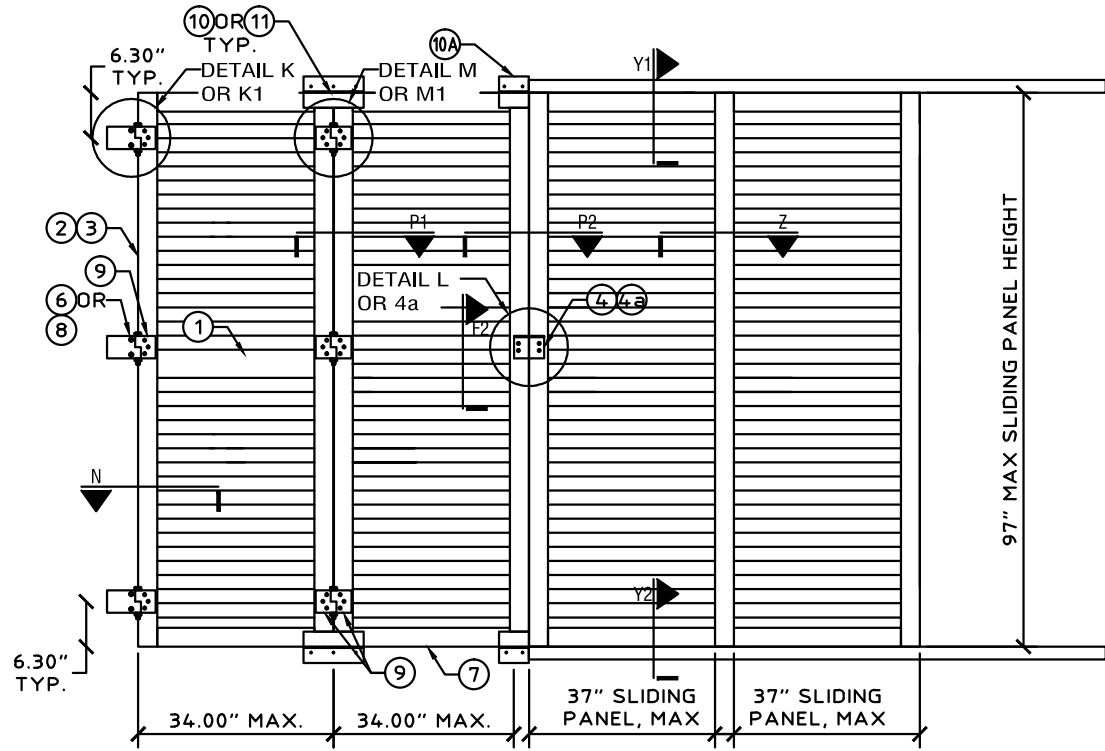
-

-

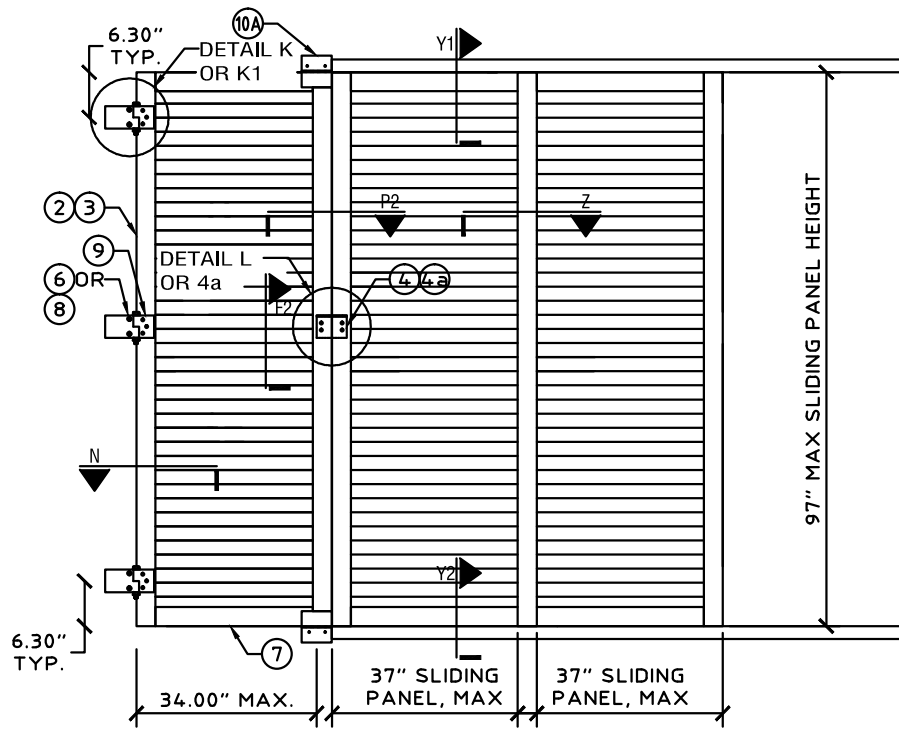
-

-

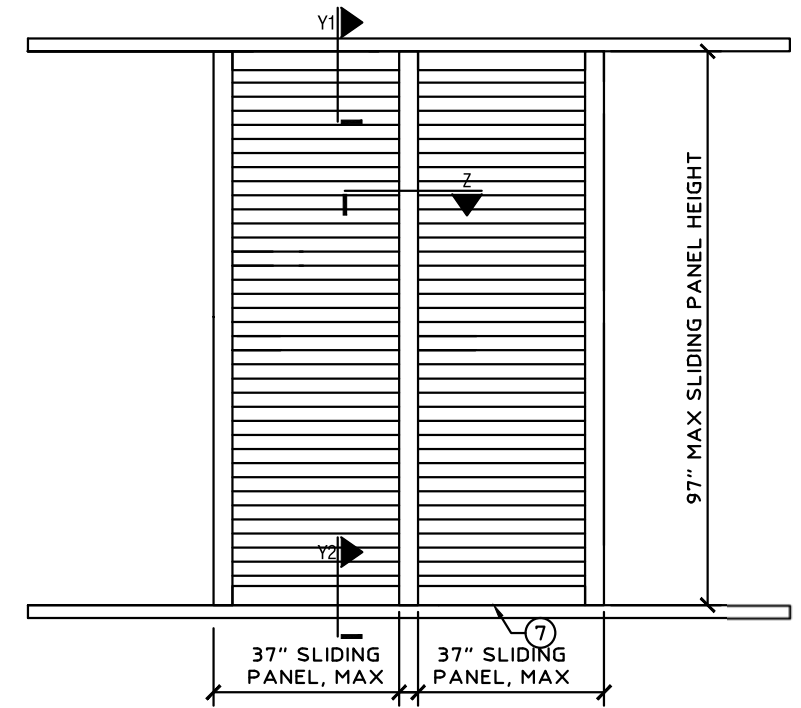
5



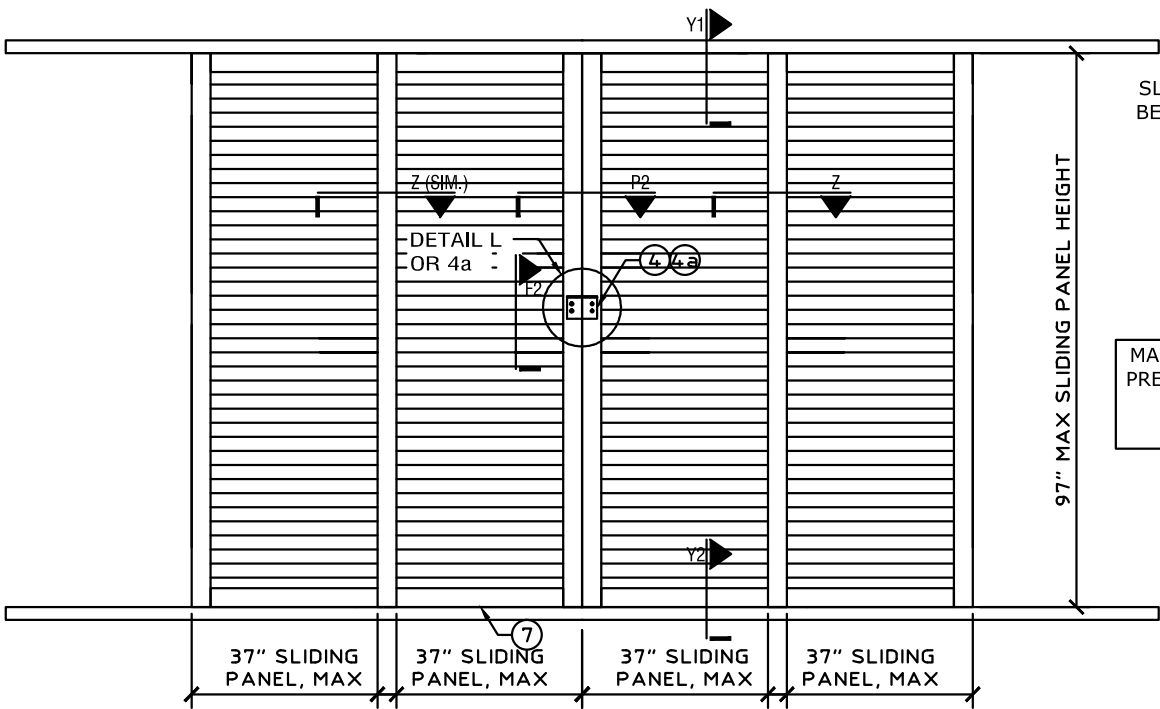
X1 ELEVATION: 2 HINGED AND 2 SLIDING PANELS  
SCALE: N.T.S.



X2 ELEVATION: 1 HINGED AND 2 SLIDING PANELS  
SCALE: N.T.S.



X5 ELEVATION: 2 SLIDING PANELS  
SCALE: N.T.S.

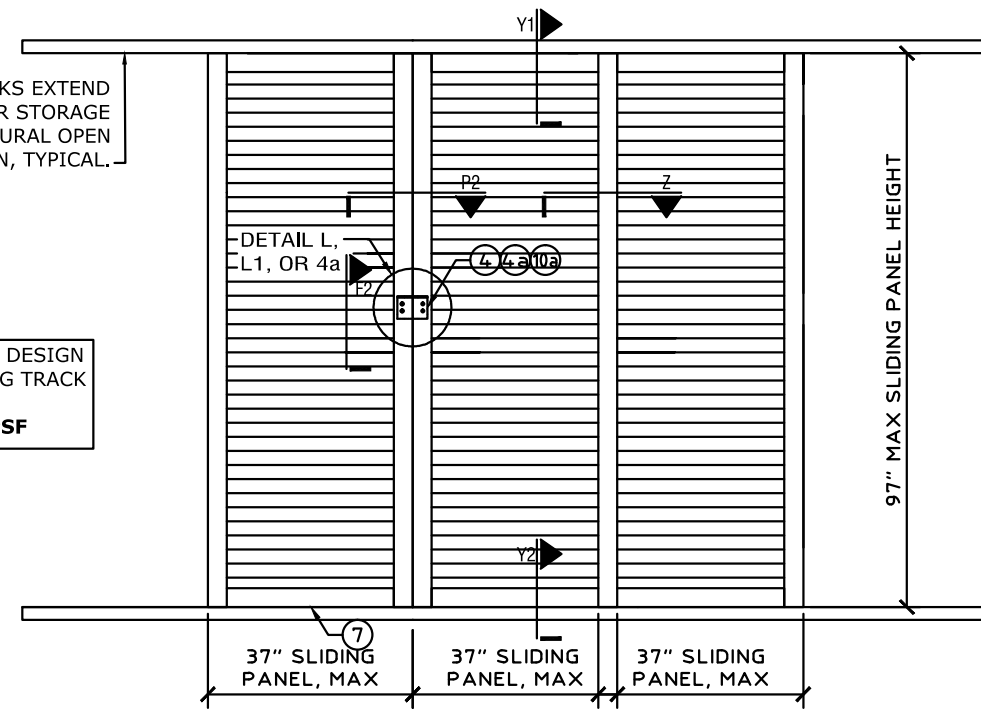


X3 ELEVATION: 4 SLIDING PANELS  
SCALE: N.T.S.

SLIDING PANEL TRACKS EXTEND BEYOND FOR SHUTTER STORAGE IN NON-STRUCTURAL OPEN POSITION, TYPICAL.

MAXIMUM ALLOWABLE DESIGN PRESSURE FOR SLIDING TRACK OPTION:  
**+57.2 / -66.2 PSF**

NOTE: SLIDING PANEL CONSTRUCTION SAME AS HINGED PANELS.



X4 ELEVATION: 3 SLIDING PANELS  
SCALE: N.T.S.

C:\Users\colby\Engineering\Express\Production - Documents\Projects\20-26193 - FL16219.2 - FullView Colonial Shutter Hybrid (HVHZ Only)\WP\2020 FBC\20-26193e - FL16219.2 - DWG.dwg 02/16/2021 - 10:56am colby



2/16/2021

**ENGINEERING EXPRESS**  
CORPORATE OFFICE:  
160 SW 12th AVE, SUITE 106  
DEERFIELD BEACH, FL 33442  
(954) 354-0660 | (866) 396-9999  
TEAM@ENGINEERINGEXPRESS.COM  
ENGINEERINGEXPRESS.COM

**Town & Country INDUSTRIES**  
Wholesale Aluminum and Building Products  
A Division of AEC Supply Co., Inc.  
400 WEST MCNAB ROAD  
FT. LAUDERDALE, FL 33309  
FL16219.2

| REMARKS | INIT | ISSUE | DATE     | DRWN | CHKD |
|---------|------|-------|----------|------|------|
|         | KL   | FLB   | 12/20/12 |      |      |
|         | RWN  | TSB   | 4/16/15  |      |      |
|         | RWN  | FLB   | 9/28/16  |      |      |
|         | RWN  | FLB   | 8/07/17  |      |      |
|         | CCB  | RWN   | 7/01/20  |      |      |

THIS DOCUMENT IS THE PROPERTY OF FRANK L. BENNARDO, P.E. AND SHALL NOT BE REPRODUCED, COPIED, OR TRANSMITTED IN ANY FORM OR BY ANY MEANS, WITHOUT THE WRITTEN PERMISSION OF FRANK L. BENNARDO, P.E. ALTERATIONS, ADDITIONS, HIGHLIGHTING, OR OTHER MARKINGS TO THIS DOCUMENT ARE NOT PERMITTED AND INVALIDATE OUR CERTIFICATION.

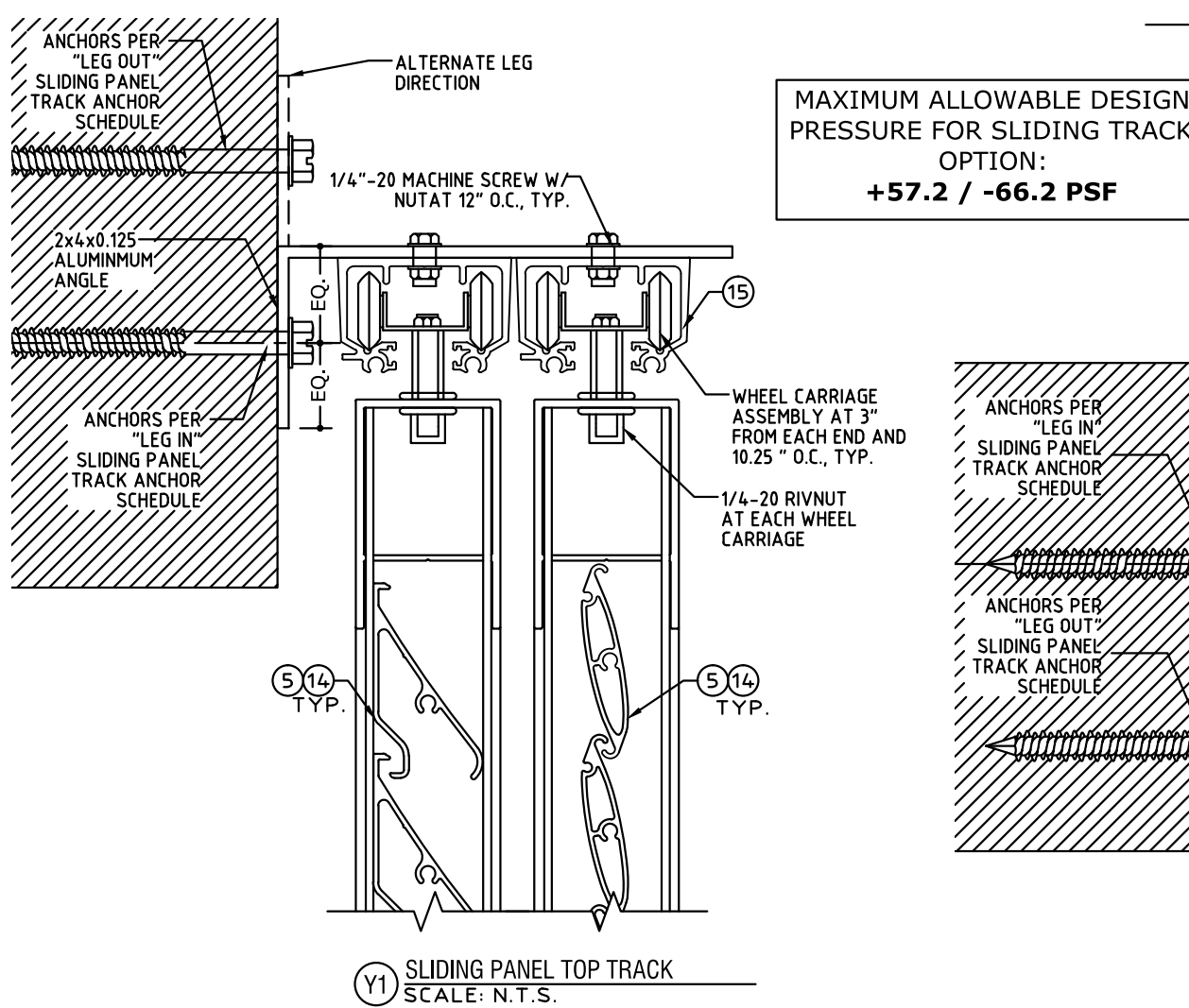
COPYRIGHT ENGINEERING EXPRESS

20-26193

SCALE: -

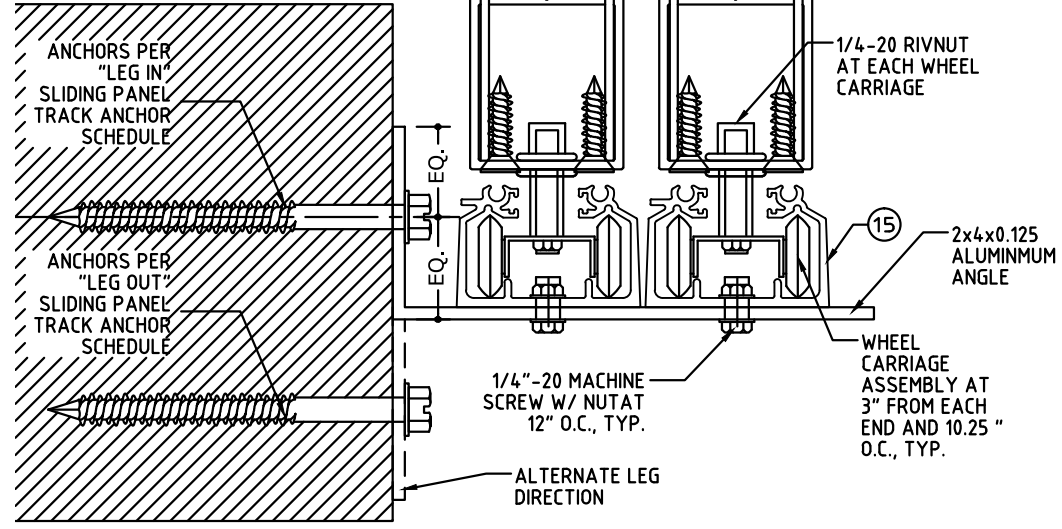
PAGE DESCRIPTION:

7

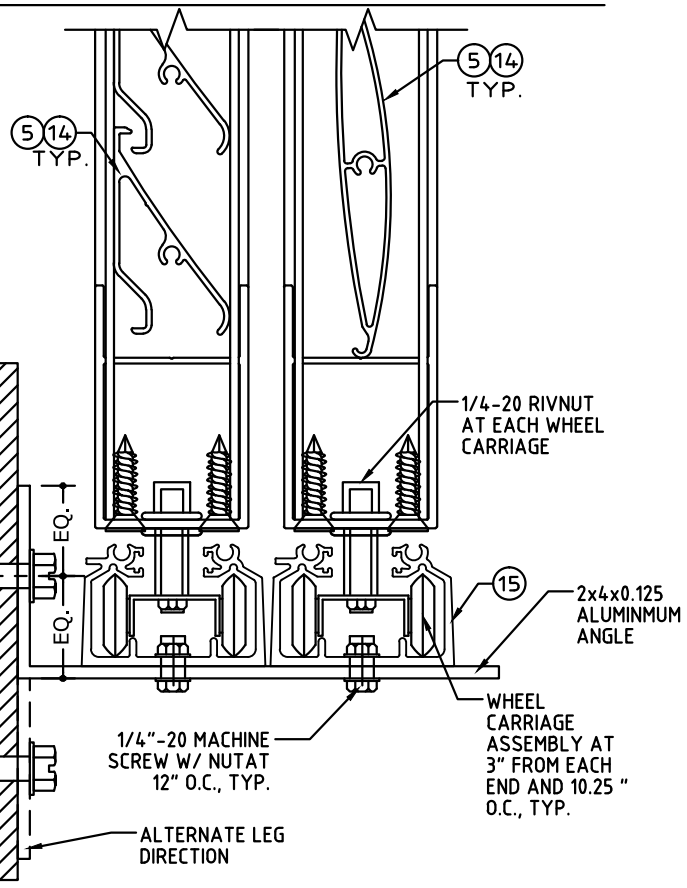


Y1 SLIDING PANEL TOP TRACK  
SCALE: N.T.S.

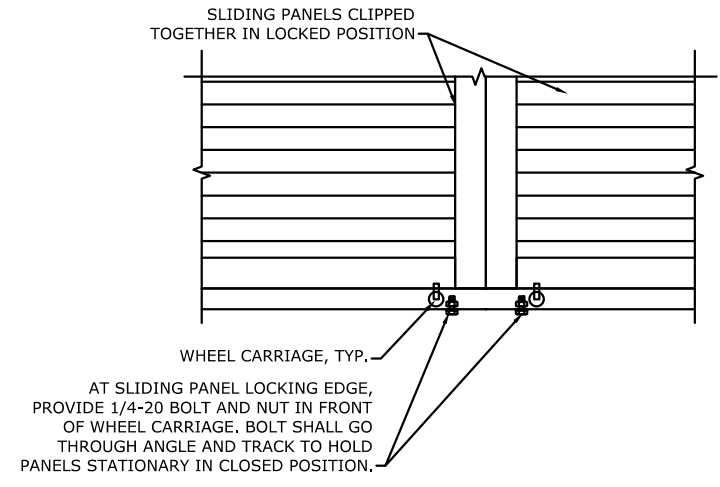
MAXIMUM ALLOWABLE DESIGN PRESSURE FOR SLIDING TRACK OPTION:  
**+57.2 / -66.2 PSF**



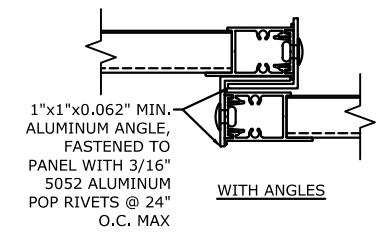
Y2 SLIDING PANEL BOTTOM TRACK  
SCALE: N.T.S.



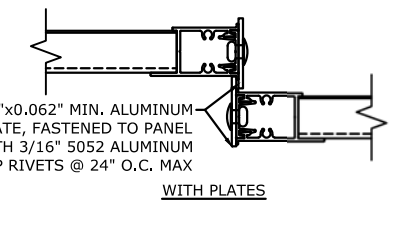
Z SLIDING PANEL INTERLOCK  
SCALE: N.T.S.



ZZ WHEEL CARRIAGE STOPS FOR SLIDING PANELS  
SCALE: N.T.S.



WITH ANGLES



WITH PLATES

"LEG IN" SLIDING PANEL TRACK ANCHOR SCHEDULE:

| HOST STRUCTURE           | ANCHOR   | SLIDING PANEL VERTICAL SPAN |          |          |          |          |          |
|--------------------------|--|-----------------------------|----------|----------|----------|----------|----------|
|                          |  | 36"                         | 48"      | 60"      | 72"      | 84"      | 97"      |
| CONCRETE (3192 PSI MIN.) | 1/4" ITW SS TAPCONS W/ 1-3/4" MIN. EMBEDMENT AND 2-1/2" MIN. EDGE DISTANCE     | 16" O.C.                    | 16" O.C. | 16" O.C. | 16" O.C. | 16" O.C. | 16" O.C. |
|                          | 1/4" DEWALT ULTRACON W/ 1-3/4" MIN. EMBEDMENT AND 2-1/2" MIN. EDGE DISTANCE    | 16" O.C.                    | 16" O.C. | 16" O.C. | 16" O.C. | 16" O.C. | 16" O.C. |
| CONCRETE (3500 PSI MIN.) | 1/4" MILLENIUM MILLFAST W/ 1-3/4" MIN. EMBEDMENT AND 2-1/2" MIN. EDGE DISTANCE | 16" O.C.                    | 16" O.C. | 16" O.C. | 16" O.C. | 16" O.C. | 16" O.C. |
| HOLLOW CONCRETE BLOCK    | 1/4" MILLENIUM MILLFAST W/ 1-1/4" MIN. EMBEDMENT AND 2-1/2" MIN. EDGE DISTANCE | 16" O.C.                    | 13" O.C. | 11" O.C. | 9" O.C.  | 8" O.C.  | 7" O.C.  |
|                          | 1/4" ITW SS TAPCONS W/ 1-1/4" MIN. EMBEDMENT AND 2-1/2" MIN. EDGE DISTANCE     | 15" O.C.                    | 12" O.C. | 9" O.C.  | 8" O.C.  | 7" O.C.  | 6" O.C.  |
|                          | 1/4" DEWALT ULTRACON W/ 1-1/4" MIN. EMBEDMENT AND 2-1/2" MIN. EDGE DISTANCE    | 16" O.C.                    | 13" O.C. | 10" O.C. | 8" O.C.  | 7" O.C.  | 6" O.C.  |
|                          | 5/16" ITW TAPCON XL W/ 1-3/4" MIN. EMBEDMENT AND 4" MIN. EDGE DISTANCE.        | 16" O.C.                    | 16" O.C. | 15" O.C. | 13" O.C. | 11" O.C. | 9" O.C.  |
|                          | 5/16" DEWALT ULTRACON W/ 1-1/4" MIN. EMBEDMENT AND 3-1/8" MIN. EDGE DISTANCE   | 16" O.C.                    | 16" O.C. | 16" O.C. | 14" O.C. | 12" O.C. | 10" O.C. |
| WOOD (G=0.42 MIN.)       | 1/4" LAG SCREW W/ 1-1/2" MIN. EMBEDMENT AND 3/4" MIN. EDGE DISTANCE            | 16" O.C.                    | 16" O.C. | 16" O.C. | 16" O.C. | 16" O.C. | 16" O.C. |
|                          | #14 SMS OR WOOD SCREW W/ 1-1/2" MIN. EMBEDMENT AND 3/4" MIN. EDGE DISTANCE.    | 16" O.C.                    | 16" O.C. | 16" O.C. | 16" O.C. | 15" O.C. | 13" O.C. |

**NOTES:** TABLE PROVIDES MAXIMUM ANCHOR SPACING FOR INDICATED ANCHOR TYPES AND SLIDING PANEL VERTICAL SPANS FOR "LEG IN" CONDITION. ANCHORS SHALL BE LOCATED 2" MAX FROM TRACK ENDS.  
\*MILLENIUM MILLFAST SCREWS SHALL HAVE T&C ULTRACOTE

"LEG OUT" SLIDING PANEL TRACK ANCHOR SCHEDULE:

| HOST STRUCTURE           | ANCHOR   | SLIDING PANEL VERTICAL SPAN |          |          |          |         |         |
|--------------------------|--|-----------------------------|----------|----------|----------|---------|---------|
|                          |  | 36"                         | 48"      | 60"      | 72"      | 84"     | 97"     |
| CONCRETE (3192 PSI MIN.) | 1/4" ITW SS TAPCONS W/ 1-3/4" MIN. EMBEDMENT AND 2-1/2" MIN. EDGE DISTANCE     | 16" O.C.                    | 13" O.C. | 10" O.C. | 9" O.C.  | 7" O.C. | 6" O.C. |
|                          | 1/4" DEWALT ULTRACON W/ 1-3/4" MIN. EMBEDMENT AND 2-1/2" MIN. EDGE DISTANCE    | 16" O.C.                    | 16" O.C. | 13" O.C. | 11" O.C. | 9" O.C. | 8" O.C. |
| CONCRETE (3500 PSI MIN.) | 1/4" MILLENIUM MILLFAST W/ 1-3/4" MIN. EMBEDMENT AND 2-1/2" MIN. EDGE DISTANCE | 16" O.C.                    | 13" O.C. | 10" O.C. | 9" O.C.  | 7" O.C. | 6" O.C. |
| HOLLOW CONCRETE BLOCK    | 1/4" MILLENIUM MILLFAST W/ 1-1/4" MIN. EMBEDMENT AND 2-1/2" MIN. EDGE DISTANCE | 7" O.C.                     | 5" O.C.  | 4" O.C.  |          |         |         |
|                          | 1/4" ITW SS TAPCONS W/ 1-1/4" MIN. EMBEDMENT AND 2-1/2" MIN. EDGE DISTANCE     | 6" O.C.                     | 4" O.C.  | 4" O.C.  | 3" O.C.  | 3" O.C. |         |
|                          | 1/4" DEWALT ULTRACON W/ 1-1/4" MIN. EMBEDMENT AND 2-1/2" MIN. EDGE DISTANCE    | 6" O.C.                     | 5" O.C.  | 4" O.C.  | 3" O.C.  | 3" O.C. |         |
|                          | 5/16" ITW TAPCON XL W/ 1-3/4" MIN. EMBEDMENT AND 4" MIN. EDGE DISTANCE.        | 10" O.C.                    | 7" O.C.  | 6" O.C.  | 5" O.C.  | 4" O.C. | 4" O.C. |
|                          | 5/16" DEWALT ULTRACON W/ 1-1/4" MIN. EMBEDMENT AND 3-1/8" MIN. EDGE DISTANCE   | 10" O.C.                    | 8" O.C.  | 6" O.C.  |          |         |         |
| WOOD (G=0.42 MIN.)       | 1/4" LAG SCREW W/ 1-1/2" MIN. EMBEDMENT AND 3/4" MIN. EDGE DISTANCE            | 16" O.C.                    | 14" O.C. | 11" O.C. | 10" O.C. | 8" O.C. | 7" O.C. |
|                          | #14 SMS OR WOOD SCREW W/ 1-1/2" MIN. EMBEDMENT AND 3/4" MIN. EDGE DISTANCE.    | 13" O.C.                    | 10" O.C. | 8" O.C.  | 7" O.C.  | 6" O.C. | 5" O.C. |

**NOTES:** TABLE PROVIDES MAXIMUM ANCHOR SPACING FOR INDICATED ANCHOR TYPES AND SLIDING PANEL VERTICAL SPANS FOR ALTERNATE "LEG OUT" CONDITION. ANCHORS SHALL BE LOCATED 2" MAX FROM TRACK ENDS.  
\*MILLENIUM MILLFAST SCREWS SHALL HAVE T&C ULTRACOTE

C:\Users\colby\Engineering\Express\Production - Documents\Projects\20-26193 - FL16219.2 - FullView Colonial Shutter Hybrid (HVHZ Only)\WP\2020 FBC\20-26193e - FL16219.2 - DWG.dwg  
02/16/2021 - 10:56am colby



2/16/2021

**ENGINEERING EXPRESS**  
CORPORATE OFFICE:  
160 SW 12th AVE, SUITE 106  
DEERFIELD BEACH, FL 33442  
(954) 354-0660 | (866) 396-9999  
TEAM@ENGINEERINGEXPRESS.COM  
ENGINEERINGEXPRESS.COM

**Town & Country INDUSTRIES**  
Wholesale Aluminum and Building Products  
A Division of AEC Supply Co., Inc.  
400 WEST MCNAB ROAD  
FT. LAUDERDALE, FL 33309  
FL16219.2

| REMARKS            | DRWN | CHKD | DATE     |
|--------------------|------|------|----------|
| INIT ISSUE         | KL   | FLB  | 12/20/12 |
| 2014 FBC           | RWN  | TSB  | 4/16/15  |
| REV - ADD 4" BLADE | RWN  | FLB  | 9/28/16  |
| 2017 FBC           | RWN  | FLB  | 8/07/17  |
| 2020 FBC           | CCB  | RWN  | 7/01/20  |

THIS DOCUMENT IS THE PROPERTY OF FRANK L. BENNARDO, P.E. AND SHALL NOT BE REPRODUCED, COPIED, OR TRANSMITTED IN ANY FORM OR BY ANY MEANS, WITHOUT THE WRITTEN PERMISSION OF FRANK L. BENNARDO, P.E. ANY ALTERATIONS, ADDITIONS, HIGHLIGHTS, OR OTHER MARKINGS TO THIS DOCUMENT ARE NOT PERMITTED AND INVALIDATE OUR CERTIFICATION.

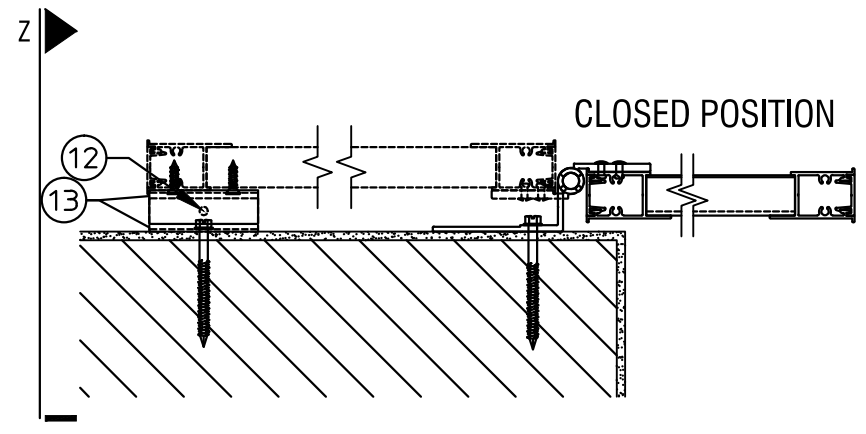
COPYRIGHT ENGINEERING EXPRESS

20-26193

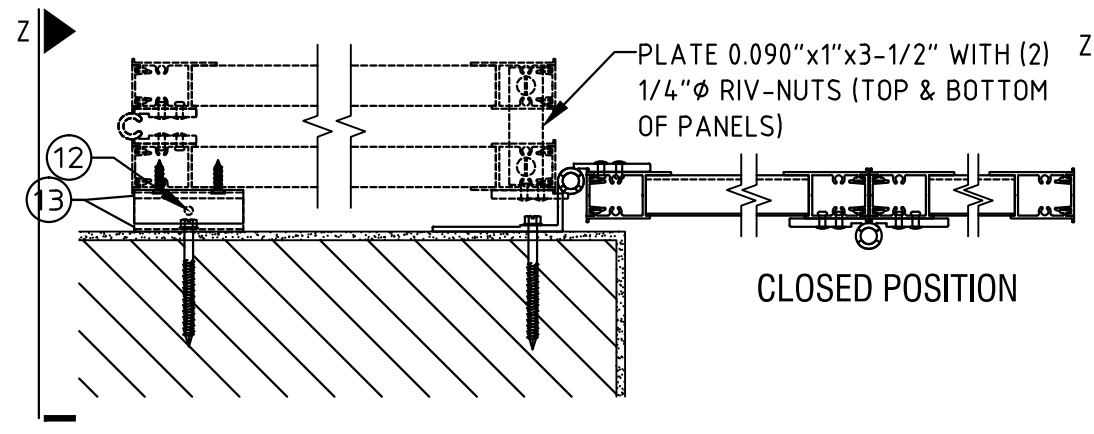
SCALE: -

PAGE DESCRIPTION:

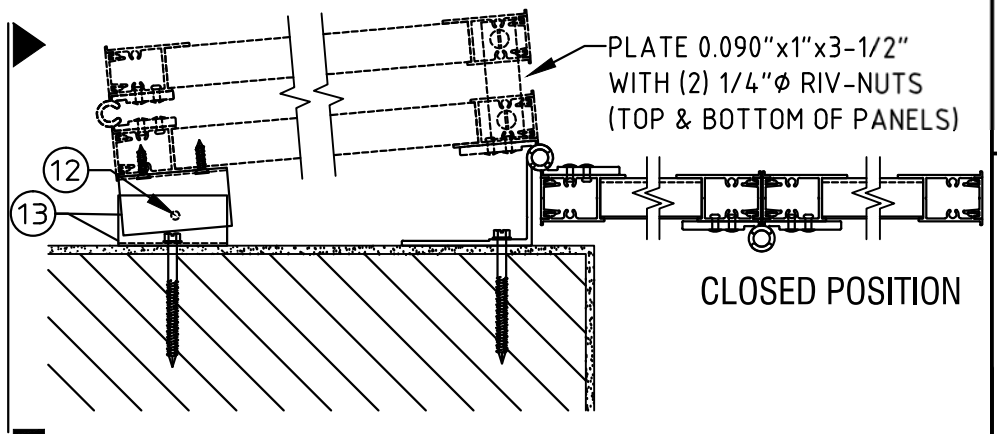
OF 7



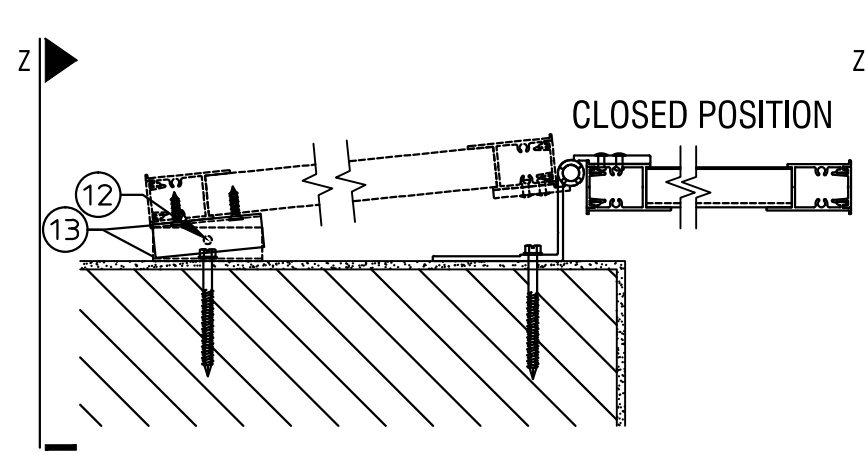
**R** PLAN VIEW 1  
SCALE: 1-1/2" = 1'-0"



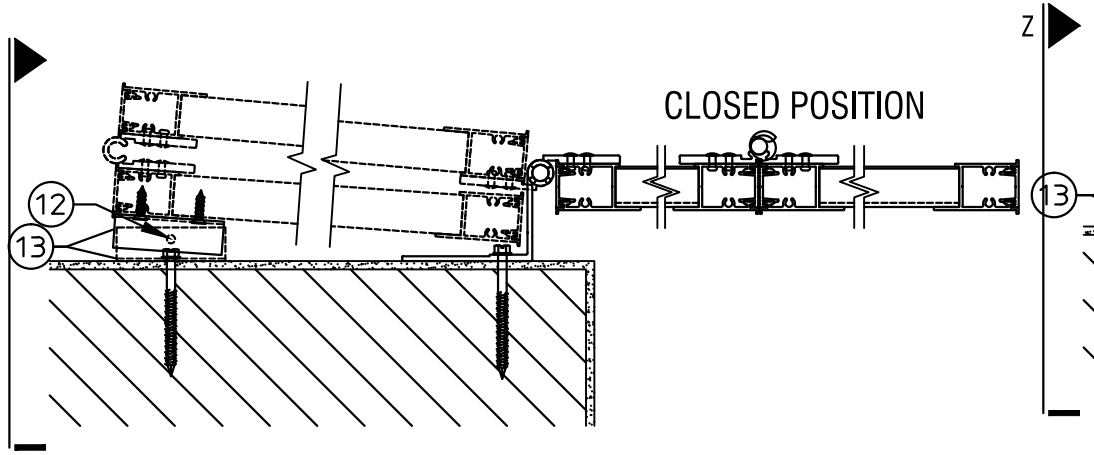
**S** PLAN VIEW 2  
SCALE: 1-1/2" = 1'-0"



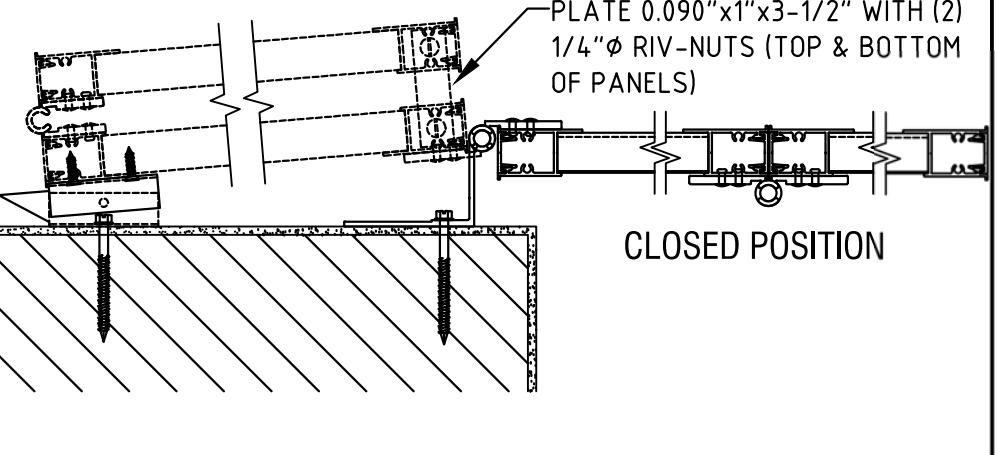
**T** PLAN VIEW 3  
SCALE: 1-1/2" = 1'-0"



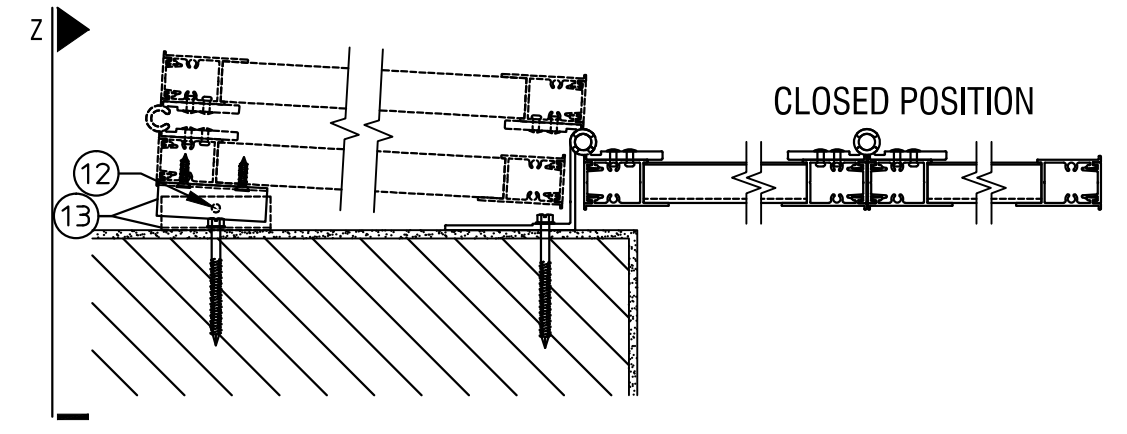
**U** PLAN VIEW 4  
SCALE: 1-1/2" = 1'-0"



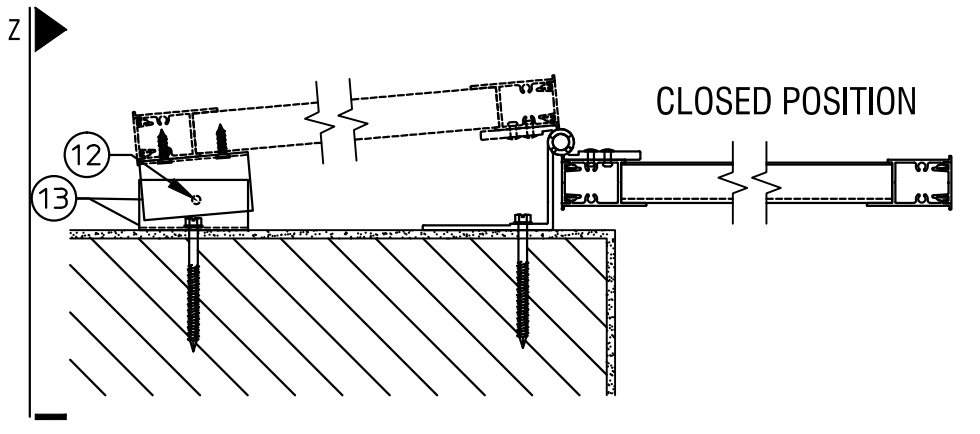
**V** PLAN VIEW 5  
SCALE: 1-1/2" = 1'-0"



**Y** PLAN VIEW 8  
SCALE: 1-1/2" = 1'-0"



**W** PLAN VIEW 7  
SCALE: 1-1/2" = 1'-0"



**X** PLAN VIEW 6  
SCALE: 1-1/2" = 1'-0"

C:\Users\colby\Engineering\Production - Documents\Projects\20-26193 - FL16219.2 - FullView Colonial Shutter Hybrid (HVHZ Only)\WP\2020 FBC\20-26193e - FL16219.2 - DWG.dwg 02/16/2021 - 10:56am colby